

## IMH Development Council Mission

The IMH Development Council, through promotion, education and communication, raises a constant flow of charitable contributions. Funds are used for continuous improvement of the regional services provided by the Iroquois Memorial health system.

## IMH Development Council Vision

Expand regional support to ensure healthcare excellence.

## Completed Projects

- Helipad • \$750,000
- New Surgery Center • \$5 million
- Milford Clinic • \$500,000
- Ambulance • \$100,000



Conceptual Entry Design for the Proposed  
New IMH Rehabilitation Therapy Center

## IMH DEVELOPMENT COUNCIL Rehabilitation Therapy Center Fundraising Drive

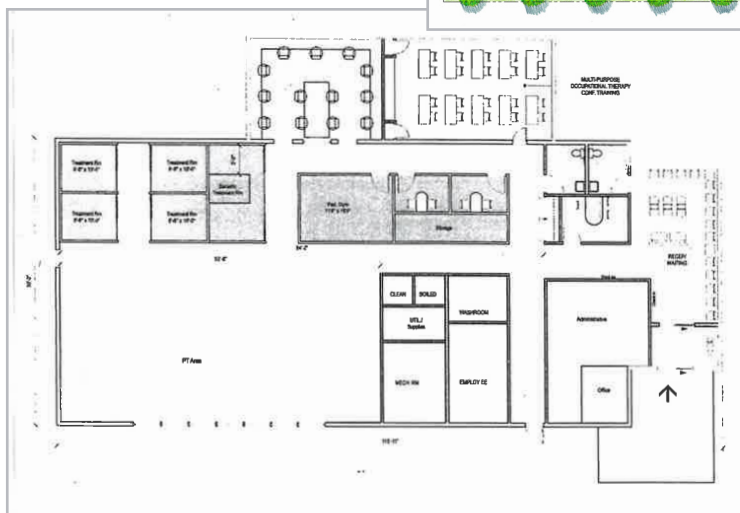
## Committee Members

John Bell, Bob Burd, Dr. Nick Burns,  
Larry Burton, Roger Dittrich,  
Michelle Fairley, Steve Knapp,  
Jennifer Nasers, Diane Natschke,  
Rhonda Pence, Stacey Smith,  
and Michael Tilstra.



The Rehabilitation Center will serve as a hub for physical therapy, occupational therapy and speech therapy rehabilitation and wellness, providing cutting-edge services to enhance the quality of life for patients recovering from injuries or managing chronic conditions. **This project will impact the wellbeing of you, your loved ones, and residents in the surrounding communities.** To achieve our vision, we have set a fundraising goal of \$2.5 million.

**Your contribution will make a lasting impact** on the lives of those in your community and help us realize our shared vision for a healthier and more vibrant future. Monetary commitments will be truly appreciated and recognized.



## Proposed Layout

Corner of Fourth Street and  
Fairman Avenue

## Ways to Donate

- Cash/Check
- Gifting Annuities
- Required Minimum Distribution
- Qualified Charitable Distribution
- Grain Gifting
- Donor Advised Fund
- Trusts
- Endowments
- Ask Your Financial Advisor
- No Donation Too Small

Pledge	Monthly Donor	Annual Donor	One-Time Donor
<b>\$2,500</b> Ruby Level			
<b>\$5,000</b> Emerald Level			
<b>\$10,000</b> Sapphire Level			
<b>\$25,000</b> Diamond Level			
Other			

We respectfully ask for your support by addressing donations to:

**IMH Development Council**  
**200 East Fairman Avenue**  
**Waukegan, IL 60070**

Questions?

[development.council@imhrh.org](mailto:development.council@imhrh.org)