

2022

COMMUNITY HEALTH NEEDS ASSESSMENT

CONTENTS

Statement of Purpose

IMH Board of Directors

Executive Summary

Scope of Assessment

Methodology and Gaps Discussion

Evaluation of Prior Implementation Strategy

Geographic Assessment Area Defined

Community Partners

Demographic Profile

Survey Questions

Summary of Findings and Recommendations

Need Identification and Prioritization

Synthesized Secondary Data

Implementation Strategy

Resource Inventory

Area Health Physicians

Allied Health Providers

Centers and Clinics

Senior Care

Remarks

2022





STATEMENT OF PURPOSE

In accordance with the requirements for tax exemptions, hospital organizations must meet the requirements imposed by the Internal Revenue Services as described in Section 501(r)(3) by conducting a Community Health Needs Assessment (CHNA) every three years. This CHNA will be included as part of their corporate tax filings with the Internal Revenue Service. Iroquois Memorial Hospital (IMH) is dedicated to providing the best quality health care services for the communities it serves. By assessing community health needs through a review of the available health data, collective participants perceptions of health needs of the area, local officials and community leaders and representatives of the many groups served by the hospital, IMH and its health care partners were able to identify and address the area's most pressing health care needs.

IMH BOARD OF DIRECTORS

Name	Role
Roger Dittrich	Chairman
Doug Geiger	Vice Chairman
Dr. Philip Zumwalt	Secretary
Rhonda Pence	Treasurer
Dan Tincher	
Brent Danforth	
Paul Ducat	
Sarah Micuta-Henry	



EXECUTIVE SUMMARY

IMH faces many of the same challenges confronting rural health systems across the United States. Changing demographics and shifts in governmental programming have presented both opportunities and challenges for rural healthcare. IMH has chosen to take a proactive approach in meeting these challenges. As the community continues to change, we have chosen to reevaluate, rebrand and refocus our mission to meet the needs of our community. IMH will be the leader in providing healthcare to our service area. We have expanded our vision to a holistic approach in order to heal broken lives. By focusing on the needs of our customers, we will truly promote the improved health of our community.

IMH will focus our attention and services on the needs of our community based upon its demographics and priorities as highlighted in the most recent IPLAN. We will strive to be the best in class in three primary areas:

- Providing healthcare by growing our clinics in rural areas
- Building a more comprehensive program to address drug addiction and abuse
- Recruiting surgical specialties in our rural areas

These priorities represent programming that we will develop and ask community, state and national leaders to join us in as we serve our community.

IMH will be an outstanding organization by exceeding community and board expectations through empowered people, guided by our shared values. This requires:

- A consistent CUSTOMER FOCUS for our organization
- A PASSION to provide better patient outcomes and superior customer experiences in our community
- An EMPOWERED ORGANIZATION which is both motivated and supported to satisfy customers to the fullest extent of our capabilities
- A SET OF SHARED VALUES which guides all of our decisions and actions represented in our logo and lived out in the lives of our associates



The trunk of the tree represents both the people who serve and those we serve in our community. This partnership makes IMH strong. The tree trunk is made up of 3 people which represent our past, our present, and our future. Just as the tree has roots, IMH is deeply rooted in our community. We are here to stay. The colorful leaves reflect that IMH is alive and growing. We believe that together we will thrive.



SCOPE OF ASSESSMENT

IMH elected to conduct a CHNA for 2022. The Community Health Needs Assessment was developed and conducted by IMH with support from various community members and groups. The CHNA process allowed Iroquois Memorial and its Community participants to discuss and assess the needs of the community on all levels. By looking at not only the geographical, economic, social, spiritual, and health needs, it allowed Iroquois Memorial the ability to plan a course of action on how to best serve our service area.



METHODOLOGY AND GAPS DISCUSSION

The CHNA was conducted through IMH. After reviewing primary data that was collected, it was determined to proceed with four focused groups and to also participate and contribute to the counties discussions on their Illinois Project for Local Assessment of Needs (IPLAN). Their plan is a result of a comprehensive, community-based public health needs assessment, including reviews of relevant data, collective perceptions of the community participants, and dialogue about the overall health of Iroquois County. The development of the IPLAN comprised of a multitude of representatives from community leaders, health professionals, faith leaders, business leaders, local officials, and the local schools.

Quantitative information from the U.S. Census Bureau was collected at the zip code level providing demographic and economic information and variables for multiple years of past and present data allowing for identification of trends over time. Additional data was collected from the American Community Survey, Decennial Census, Centers for Disease Control and Prevention, Behavioral Risk Factor Surveillance System, (accessed via the Health Indicators Warehouse) US Department of Health & Human Services, National Vital Statistics System (accessed via CDC WONDER), Illinois Vital Statistics. 2017 County Health Rankings Note: This indicator is compared to the lowest state average. Additional data analysis by CARES 2011-12.

Surveillance System, and Illinois County Rankings data. This assessment has explored the more focused needs of the identified groups by specifically seeking input from persons with knowledge of the specific health concerns. Input was also sought from members of the community and Iroquois County Public Health Department. As with many rural areas, secondary data is often a year or more out of date, which highlights the importance of historic trends in data in the service area.

Secondary data from state, federal and professional sources, which are cited in the text, were reviewed and compared to the primary data gathered. Identified needs were prioritized through that process and presented to hospital administration for review.

EVALUATION OF PRIOR IMPLEMENTATION STRATEGY

PRIORITY 1

ELDER CARE

IMH is committed to meeting the needs of the elders within our communities and recognize the vital role this population serves. IMH provided a multitude of services to meet the needs of our elders and plan on expanding those services more over the next few years. In our last community needs assessment, IMH planned to expand services to our elder population. So how did we do?

Over the three year time period of 2019-2021, IMH has increased its impact on the healthcare of our elder population in each of four key areas. For instance, the wound care clinic has experienced a 476% increase in utilization. The Iroquois Resident Home

with a limited bed availability (35) showed an increase of 4% in patient days over the same time period. Hospice patient days increased by 85% and Home Health visits by our nurses and therapists increased by 30% as well. As impressive as these numbers are individually, the impact on the health of our seniors can be realized in the reduction of IMH's overall readmission rate of 7.2% which is the lowest of all the hospitals in our area and compares to the State average of 16.75%.

IMH leadership is committed to continuing growth in this prioritized Elder Care area by facing the challenges of an ever changing healthcare environment.

PRIORITY 2

BEHAVIORAL HEALTH

In 2019, IMH planned to develop working relationships with outside agencies, organizations, and hospitals to address the Drug and Alcohol Addiction crisis within our community and align with multiple centers to aid in the patient's ability to get into both inpatient and outpatient treatment facilities. This was to take place over two years. The alignment with other organizations, outside agencies, and hospitals did not happen due to the country entering into a Public Health

Emergency in early 2020 when the SARS-CoV-2, or Covid-19, virus put financial and staffing strain on local healthcare organizations, including Iroquois Memorial. We did continue to assess patients with standardized tools, such as the PHQ-2 and PHQ-9, for Mental/Behavioral health issues in our clinics and hospital and refer based on the need. We are actively pursuing additional services for our patients.

PRIORITY 3

THE UNDERSERVED

In 2019, our plan was to take a holistic approach to serving the underserved. IMH was planning to explore and implement a transportation program that would provide necessary transportation to healthcare facilities, eliminating transportation as a barrier for wellness.

- In January 2020 IMH stayed in contact with "Show Bus" on their transportation and they are running with very low rates.
- IMH also dedicated their year end appeal toward a transportation van.

IMH also wanted to establish a member of the leadership team to focus on the underserved program, to seek and implement programs that would impact holistic health in our area.

- Tera Bivins, VP of Organizational Health, was put in charge of the Underserved Committee.
- In January 2020 IMH held a blanket drive where over 80 blankets were collected.

Blankets were donated to the nursing home, employees in need, "Shop with a Cop" event and the Emergency Department, where they also gave out socks, snacks, water, hats/gloves and hand warmers.

- A resource guide was created with information for people to get assistance with a variety of things.

In addition, IMH will initiate food insecurity initiatives.

- In Feb. 2020 we put together a materials list to build 6 planters boxes that would be assembled by April on the IMH patio. The Watseka H.S. greenhouse donated plants.
- A table was set up by the road, with vegetables for the community to take.
- August 2021, plans were made to put additional garden beds at the Methodist Church and Public Library.
- A Vegetable Cart is being made to display the vegetables on in 2022.

PRIORITY 4

WOMEN'S HEALTH

IMH has worked to organize events in the local communities with a focus on educating the women in our communities about their health. IMH has organized two Women's Wellness Events, each featuring a Family Nurse Practitioner. The first event, "Women's Wellness Event" was held on October 3, 2019 in Milford IL. Women were allowed to leisurely shop at a local boutique and enjoy refreshments while Chelsea Wichtner, FNP at IMH, educated these local women about women's health and breast health.

The second event, "Sip and Shop Women's Wellness Event" was held on October 14, 2021 in Kentland IN. This event featured both Laura Terrell, FNP, as well as Jennifer Grant, RPA, an

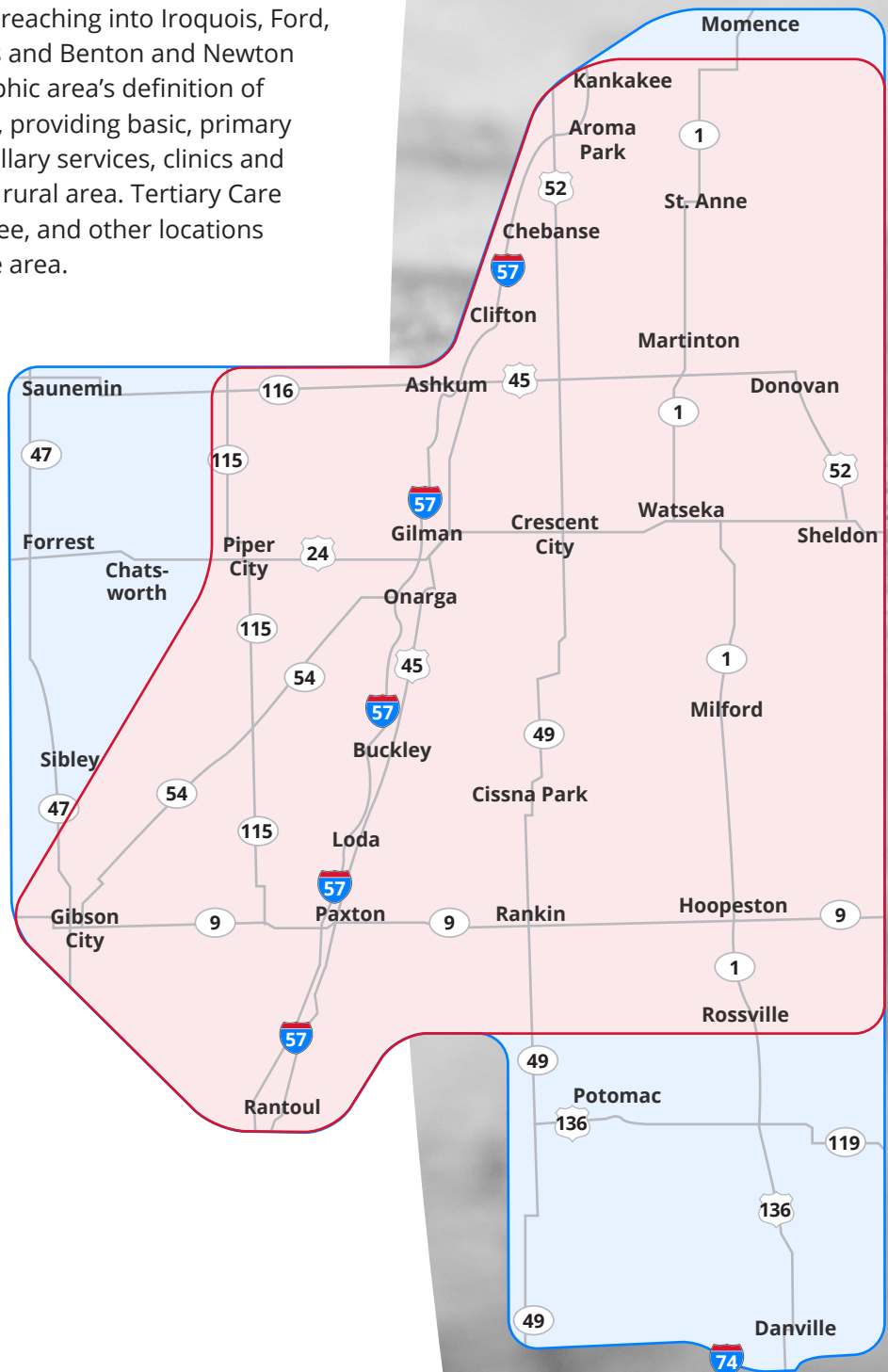
IMH Breast Care Navigator. Women came to enjoy a relaxing evening of shopping at a local Kentland boutique and enjoyed refreshments. These women left with a greater knowledge of women's health and tips for breast health.

In addition to those two IMH community events, yearly throughout the month of October, IMH offers reduced fee 3D Mammograms, which encourages women to stay in a yearly routine to keep themselves healthy. IMH also encourages our staff to wear pink on National Pink Day in October, to show our support for breast cancer awareness.


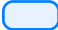
IMH has also welcomed a Urologist/ Gynecologist to our Specialty Clinic.

GEOGRAPHIC ASSESSMENT AREA DEFINED

The IMH community was identified through a facilitated meeting with senior staff as a geographic area determined to be the current primary and secondary hospital service areas, which includes all or portions of the zip code service areas surrounding Watseka and reaching into Iroquois, Ford, and Kankakee counties in Illinois and Benton and Newton counties in Indiana. This geographic area's definition of community is well-suited to IMH, providing basic, primary care through inpatient care, ancillary services, clinics and specialty clinics to residents of a rural area. Tertiary Care Hospitals in Champaign, Kankakee, and other locations receive patients from the service area.



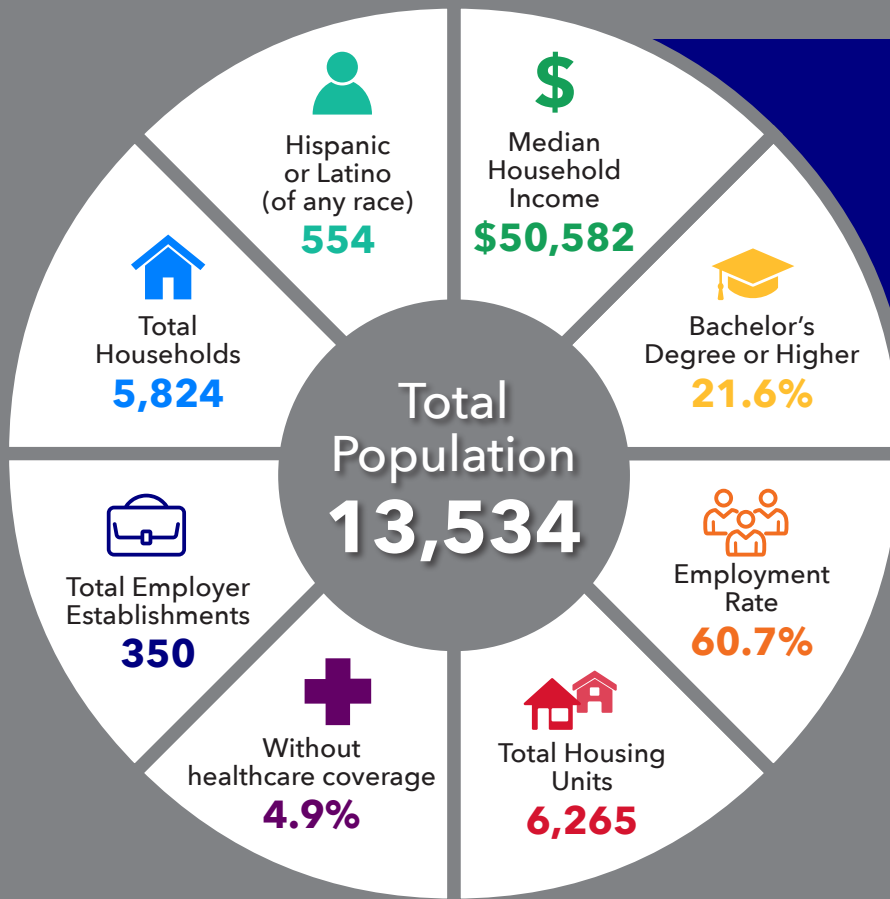
SERVICE AREA MAP

-  = Main service area
-  = Service provided on an as needed basis

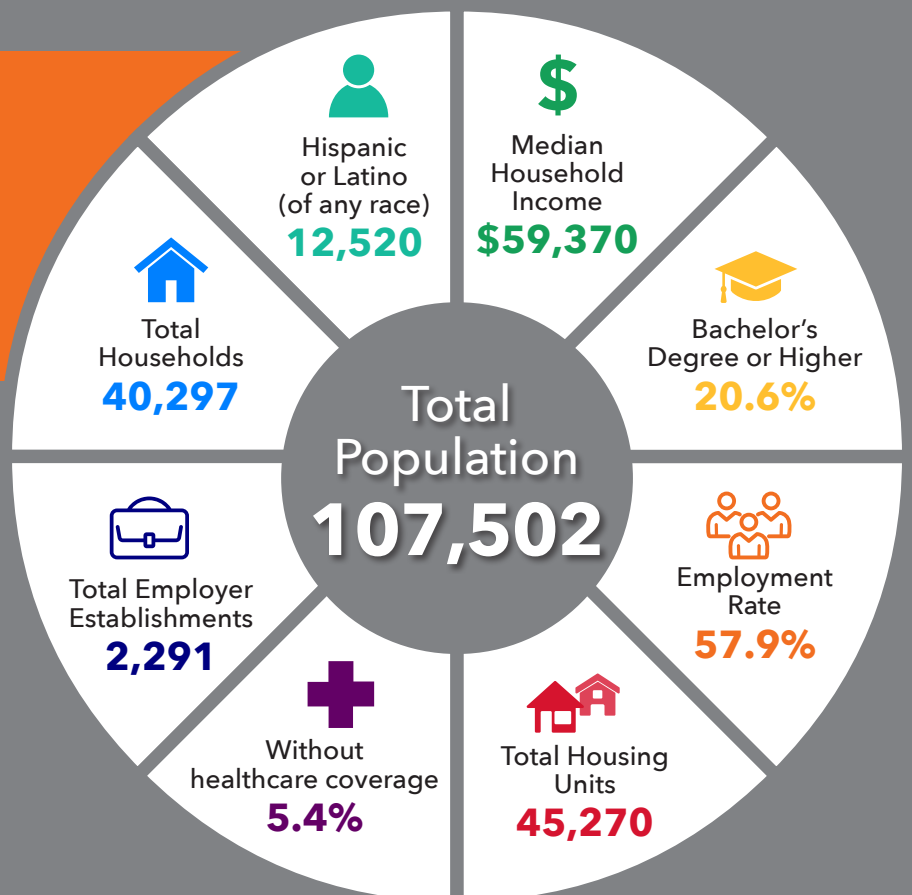
COMMUNITY PARTNERS

- Iroquois County Opioid Coalition
- Watseka Area Chamber of Commerce
- Iroquois County Board
- Iroquois Memorial Hospital Board of Directors
- Iroquois County Public Health Department
- Iroquois Memorial Hospital Team Iroquois
- Iroquois West C.U.S.D. #10
- Donovan C.U.S.D. #3
- Milford Area Public Schools
- Iroquois County School District 9
- Cissna Park School
- Central C.U.S.D. #4
- Crescent-Iroquois C.U.S.D.
- St. John's Lutheran School
- St. Paul's Lutheran School
- Local Pastors

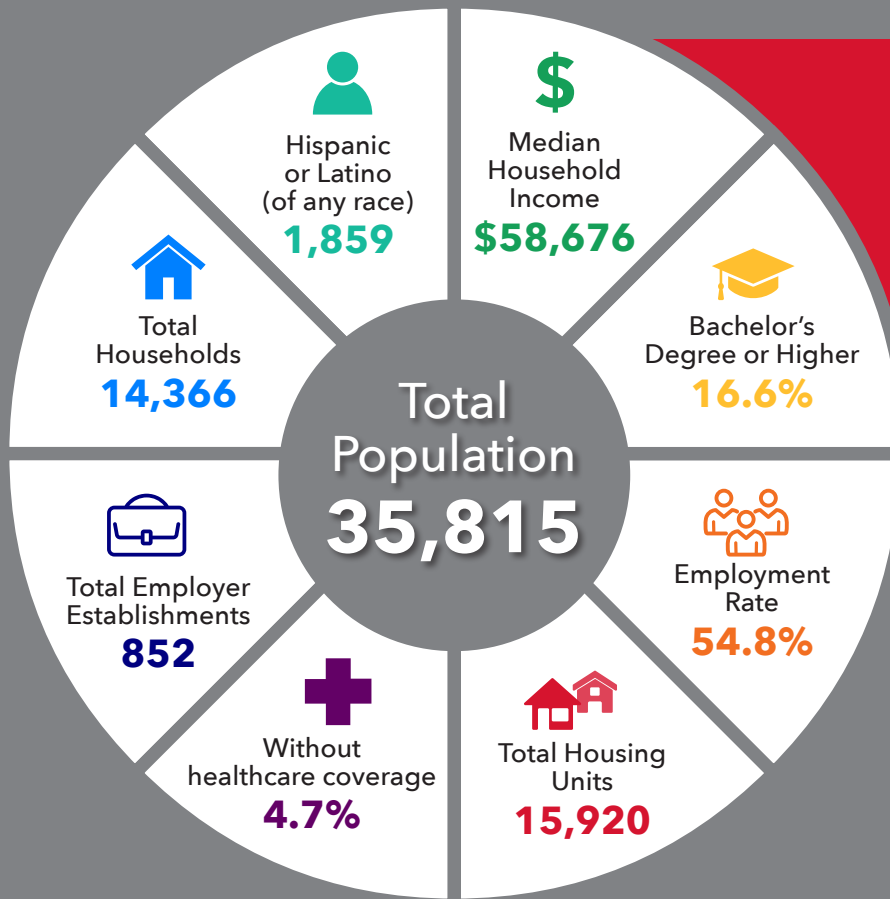
2020 CENSUS DATA FORD COUNTY, ILLINOIS



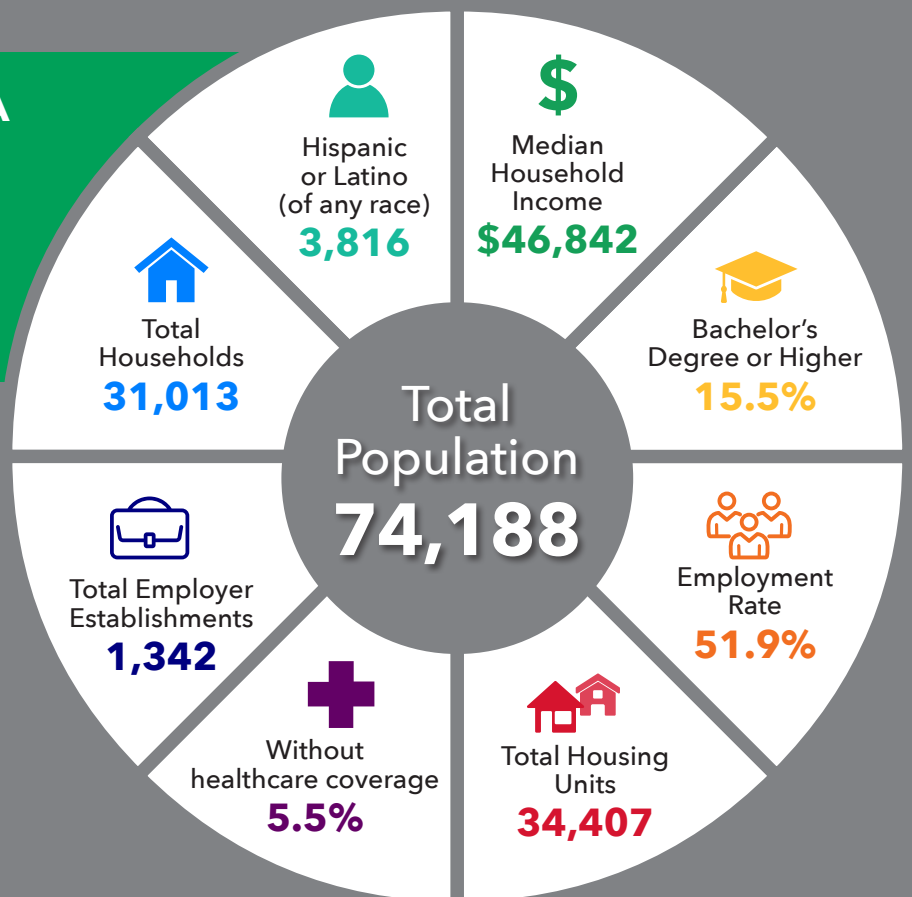
2020 CENSUS DATA KANKAKEE COUNTY, ILLINOIS



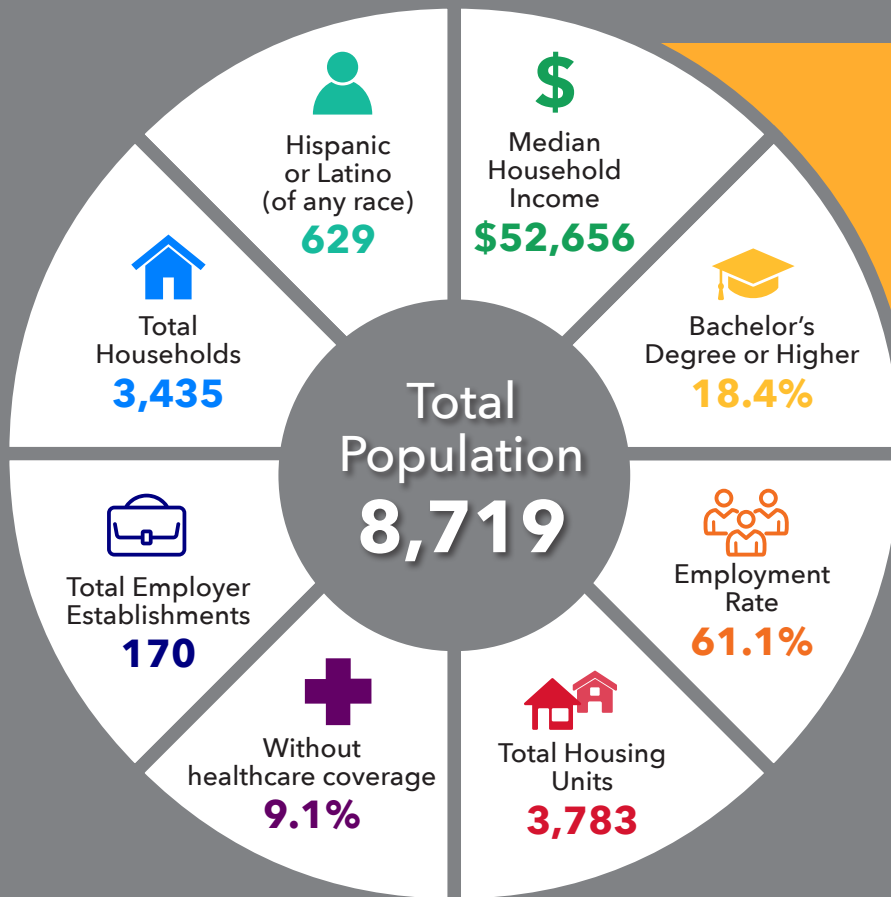
2020 CENSUS DATA LIVINGSTON COUNTY, ILLINOIS



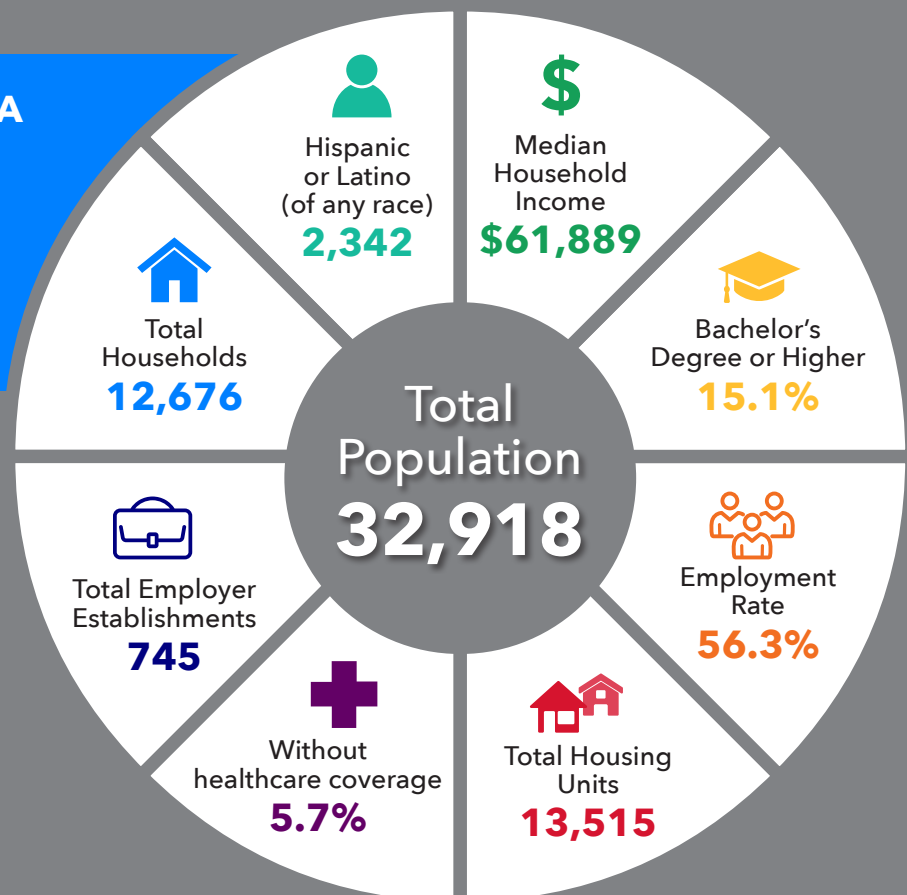
2020 CENSUS DATA VERMILION COUNTY, ILLINOIS



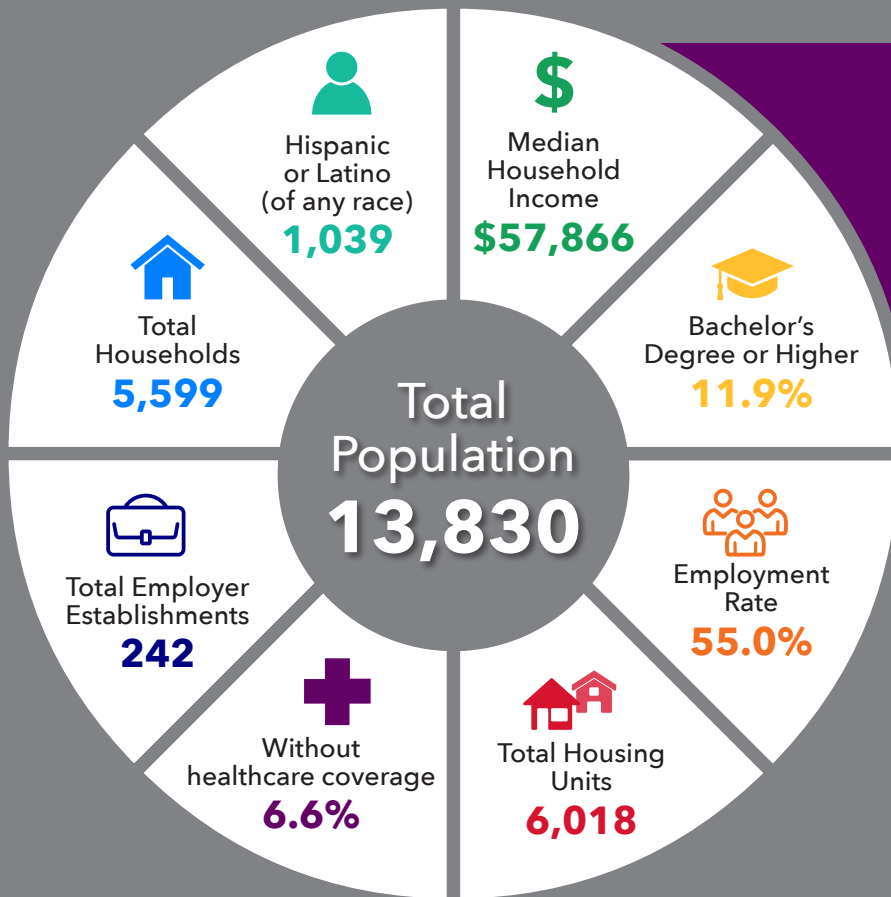
2020 CENSUS DATA BENTON COUNTY, INDIANA



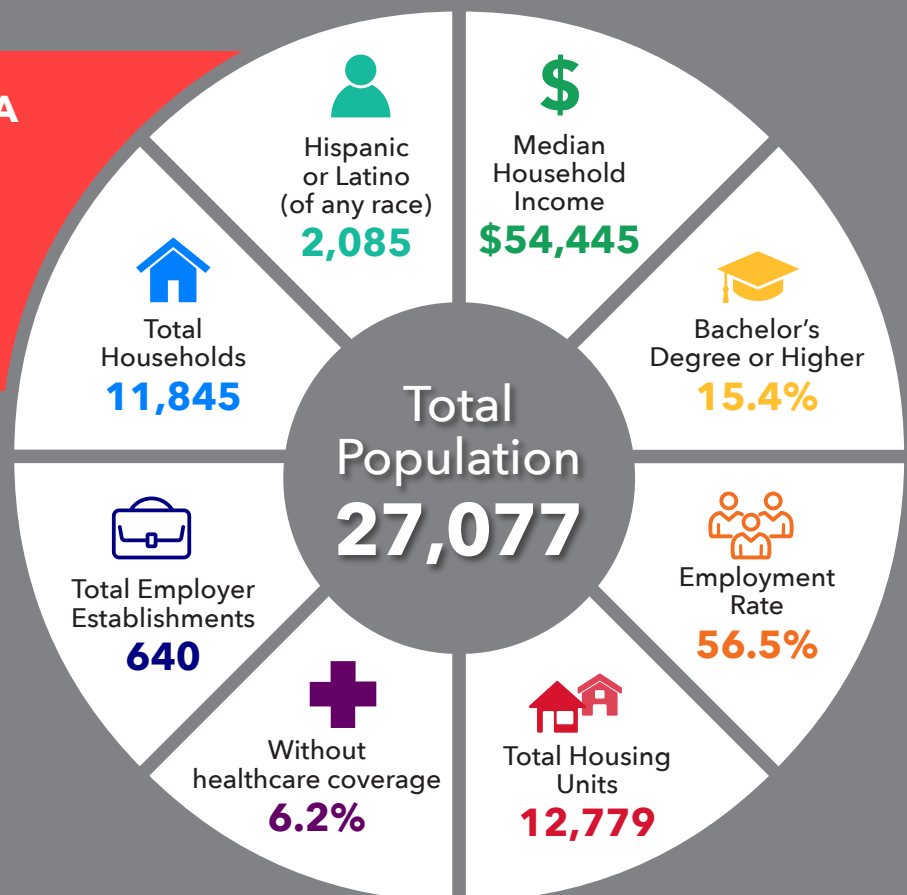
2020 CENSUS DATA JASPER COUNTY, INDIANA



2020 CENSUS DATA NEWTON COUNTY, INDIANA



2020 CENSUS DATA IROQUOIS COUNTY, ILLINOIS

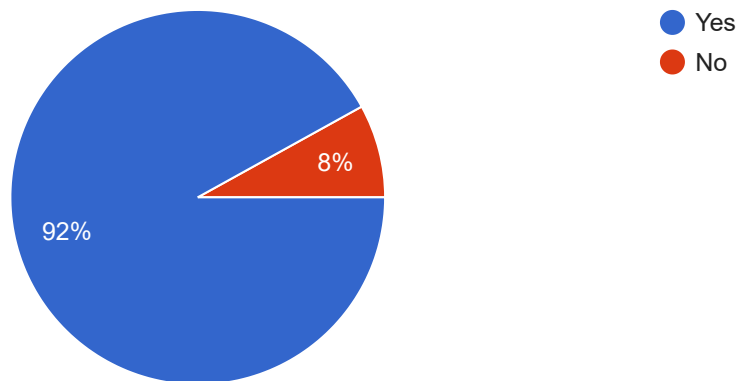


LOCAL SURVEY ASSESSMENT QUESTION RESULTS



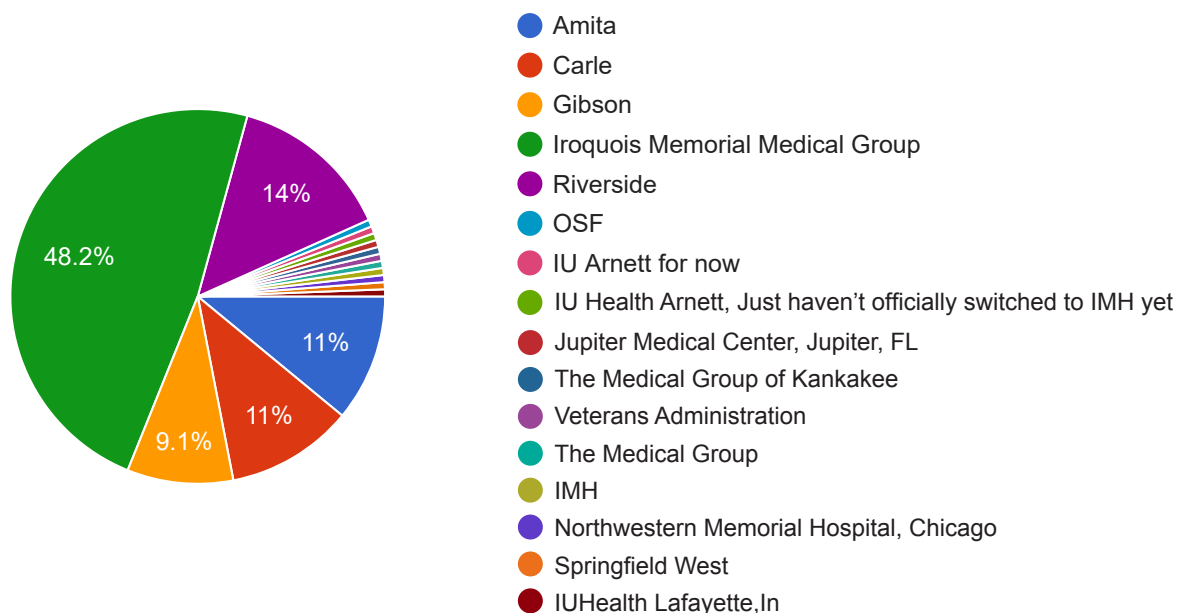
DO YOU HAVE A PRIMARY CARE PHYSICIAN?

174 responses



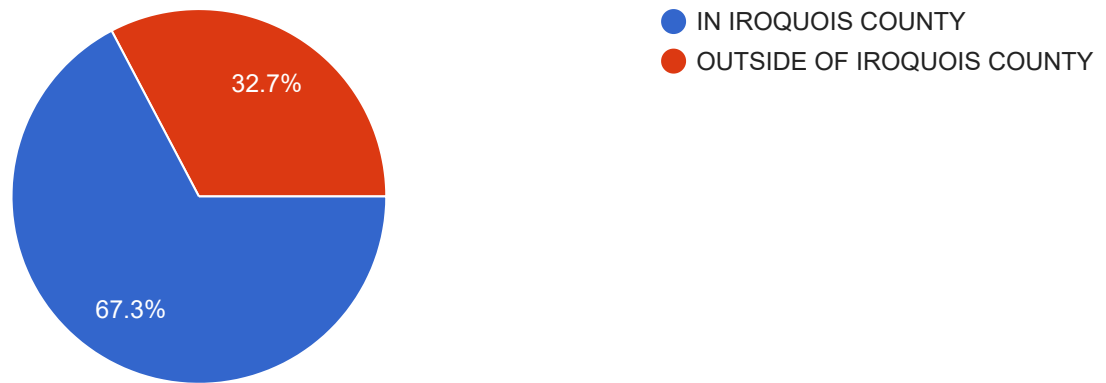
IF YES, WHAT CLINIC/HOSPITAL DOES YOUR PRIMARY CARE PHYSICIAN PRACTICE WITHIN?

164 responses



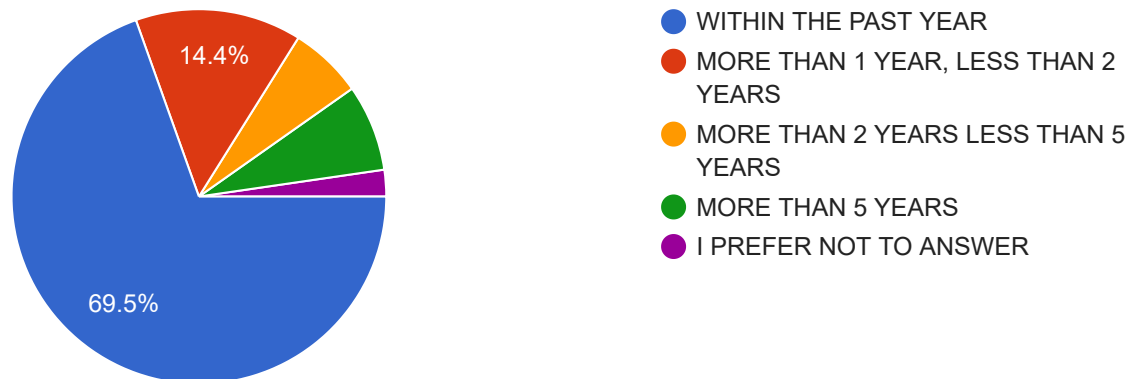
WHERE IS YOUR PROVIDER LOCATED?

162 responses



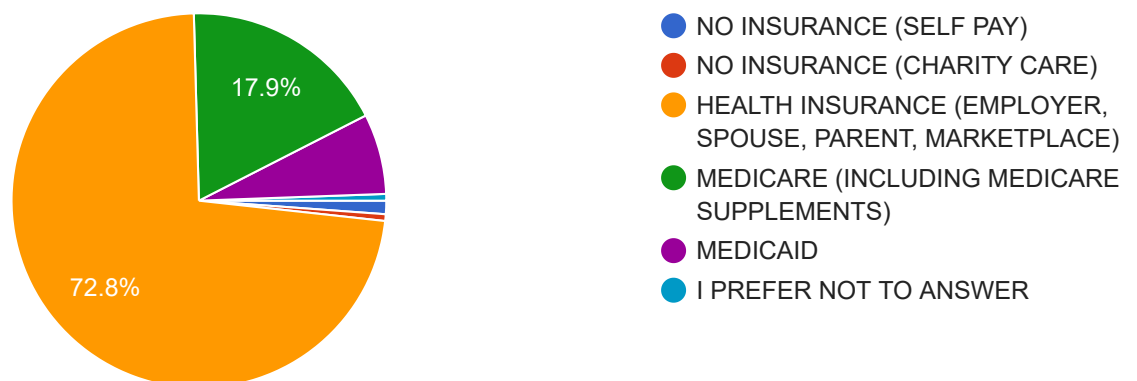
HOW LONG HAS IT BEEN SINCE YOU HAD A ROUTINE CHECK-UP AT A DOCTOR'S OFFICE?

174 responses



HOW DO YOU PAY FOR HEALTHCARE?

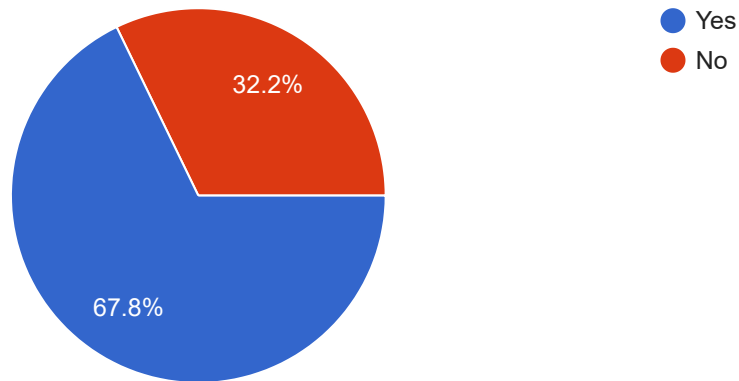
173 responses



LOCAL SURVEY ASSESSMENT QUESTION RESULTS

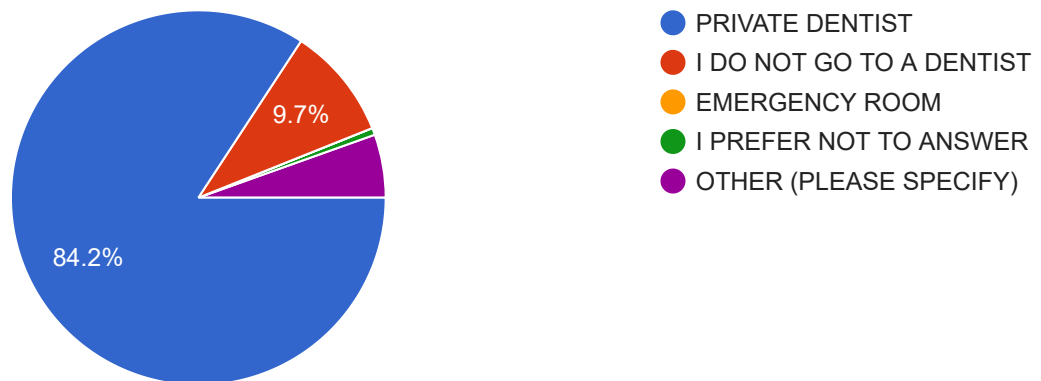
DO YOU SEE A DENTIST ON A ROUTINE BASIS?

174 responses



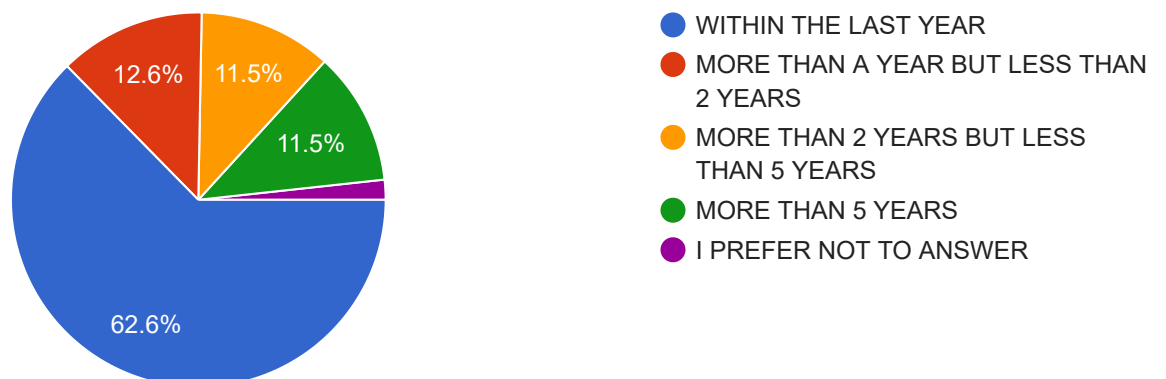
WHERE DO YOU GO FOR DENTAL SERVICES?

165 responses



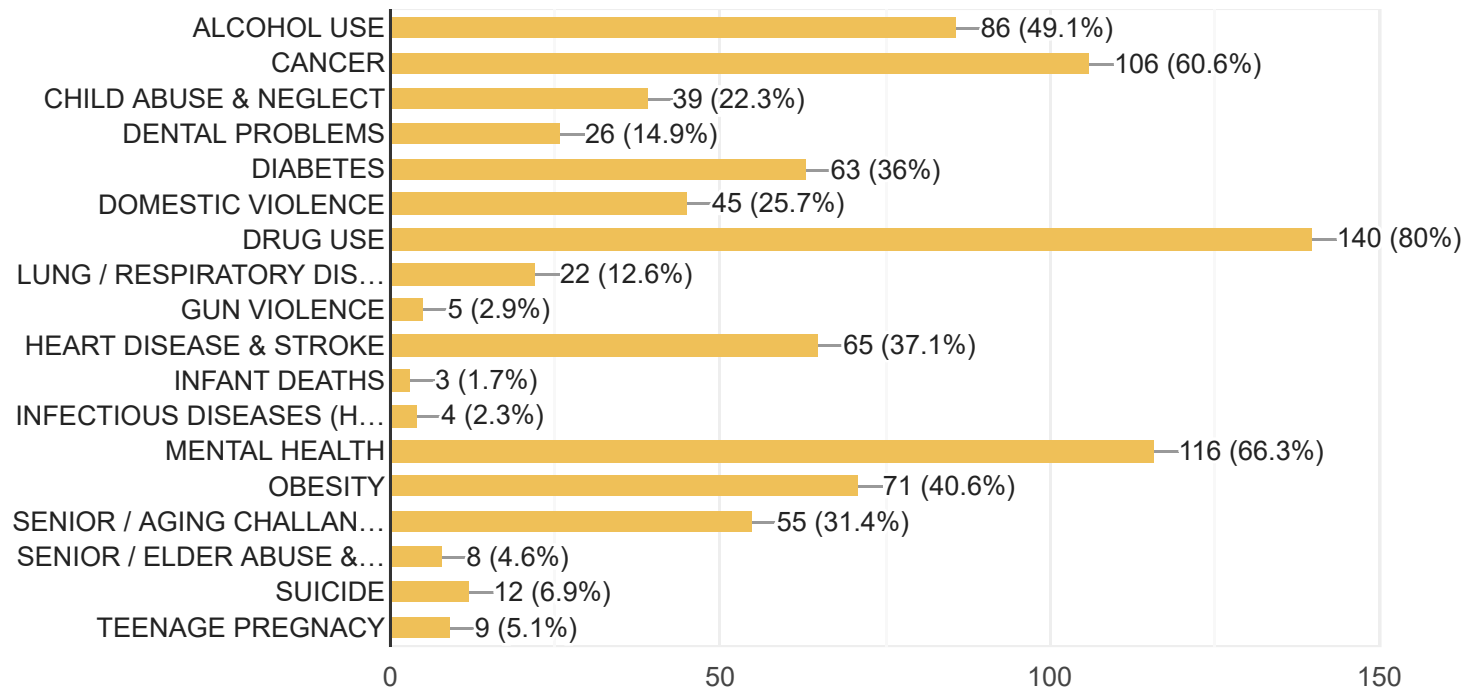
HOW LONG HAS IT BEEN SINCE YOU HAVE SEEN A DENTIST?

174 responses



SELECT ONLY 5

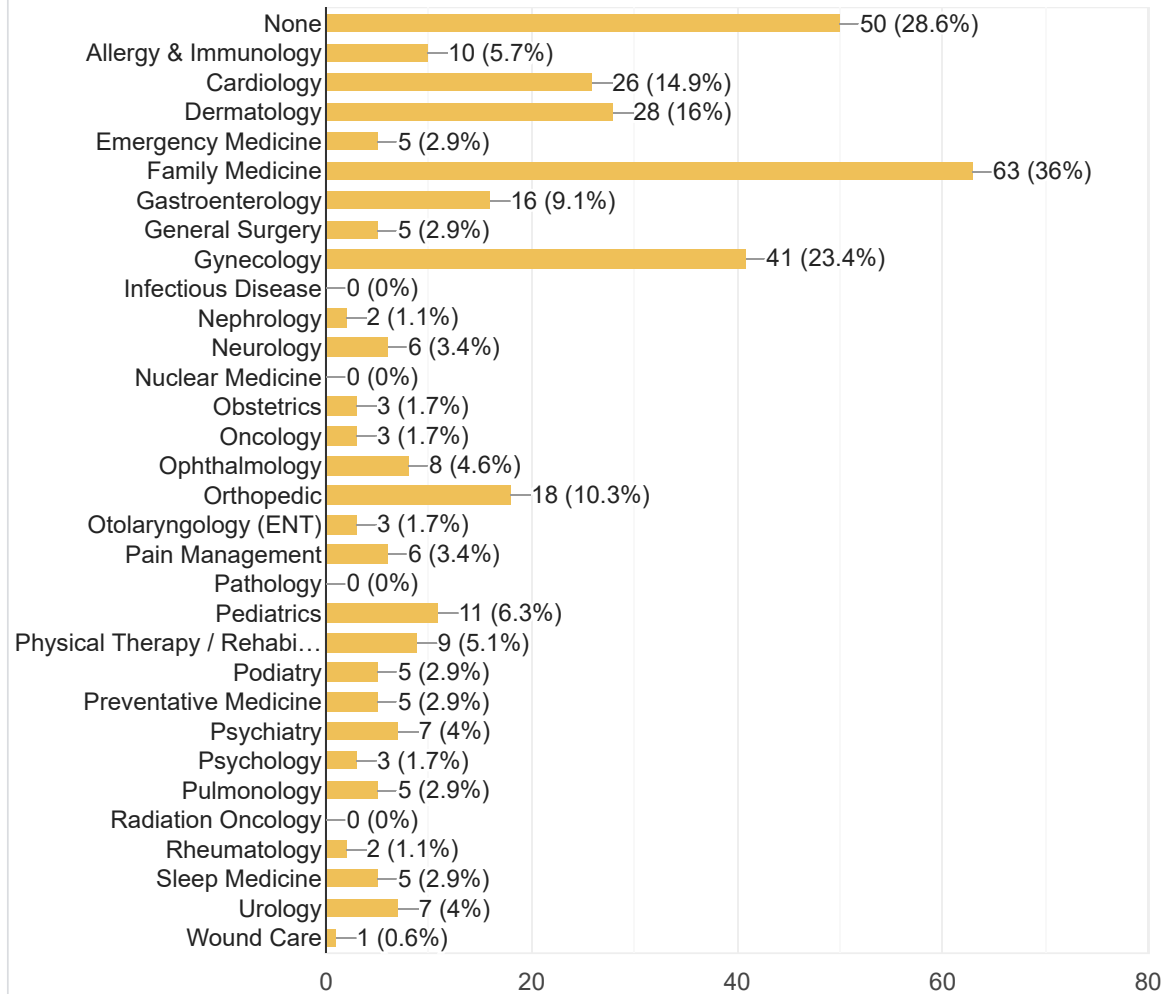
175 responses



LOCAL SURVEY ASSESSMENT QUESTION RESULTS

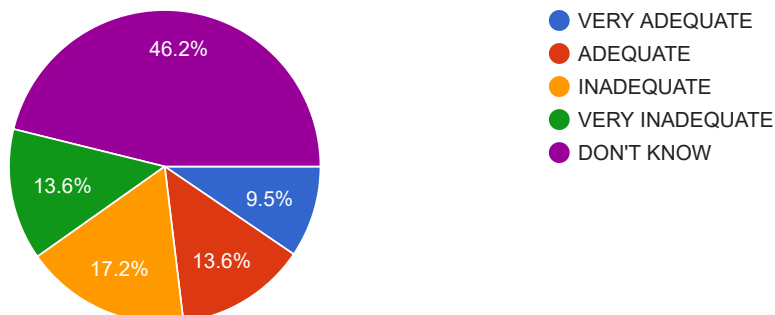
WHAT SPECIALISTS DO YOU CURRENTLY USE?

175 responses



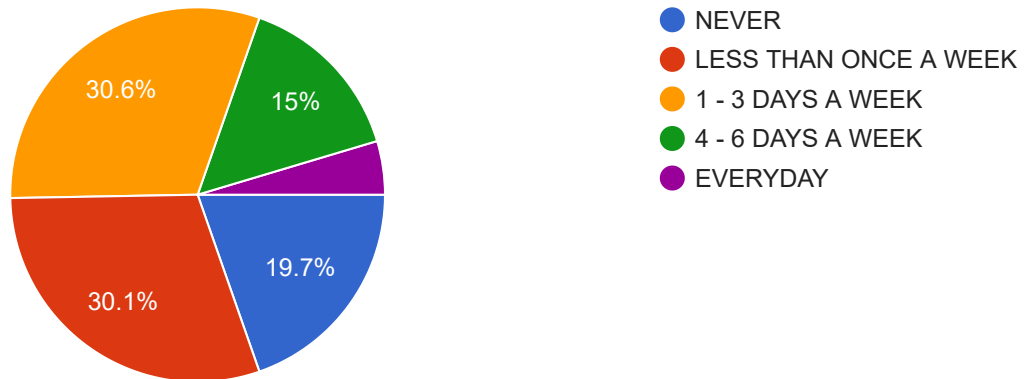
DRUG TREATMENT SERVICES

169 responses



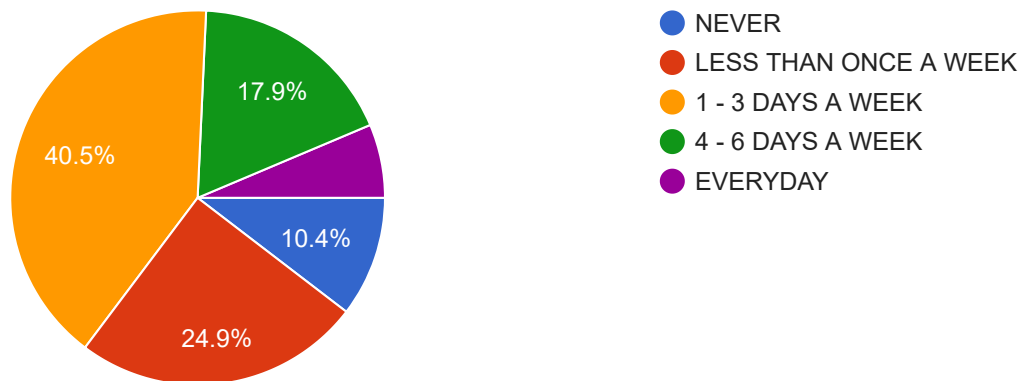
HOW MANY DAYS DO YOU EXERCISE FOR AT LEAST 30 MINUTES?

173 responses



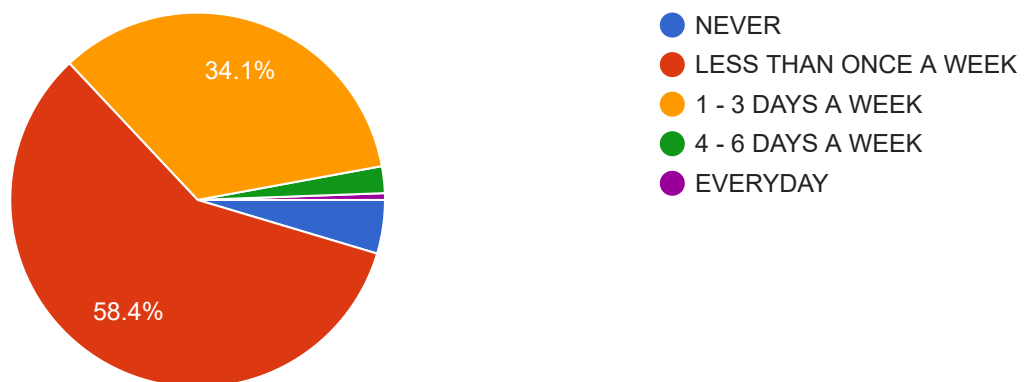
I EAT AT LEAST 5 SERVINGS OF FRUITS AND VEGETABLES A DAY.

173 responses



HOW MANY DAYS DO YOU EAT FAST FOOD?

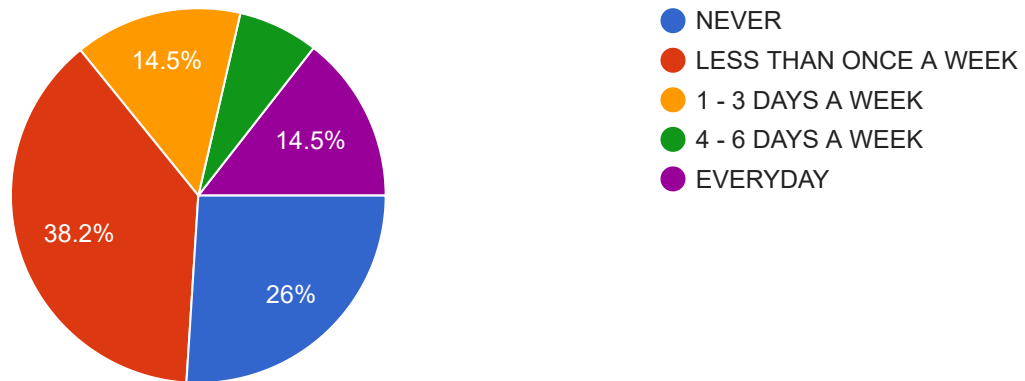
173 responses



LOCAL SURVEY ASSESSMENT QUESTION RESULTS

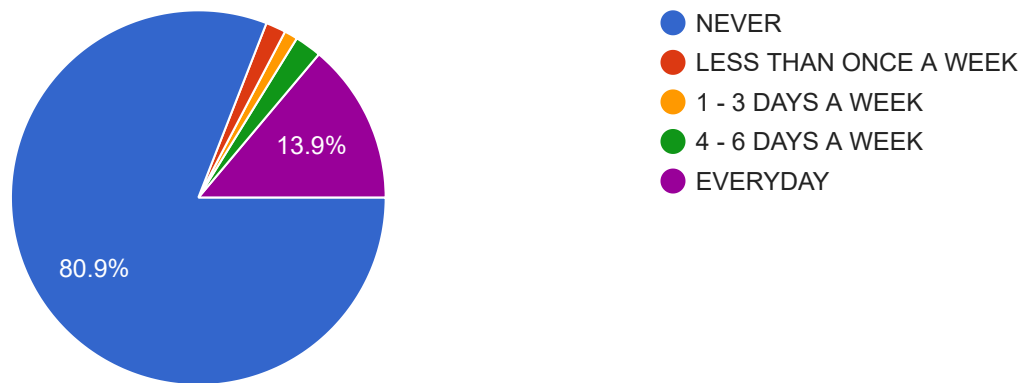
I DRINK MORE THAN 1 SUGARY DRINK A DAY (SODA, SWEET TES, ETC.)

173 responses



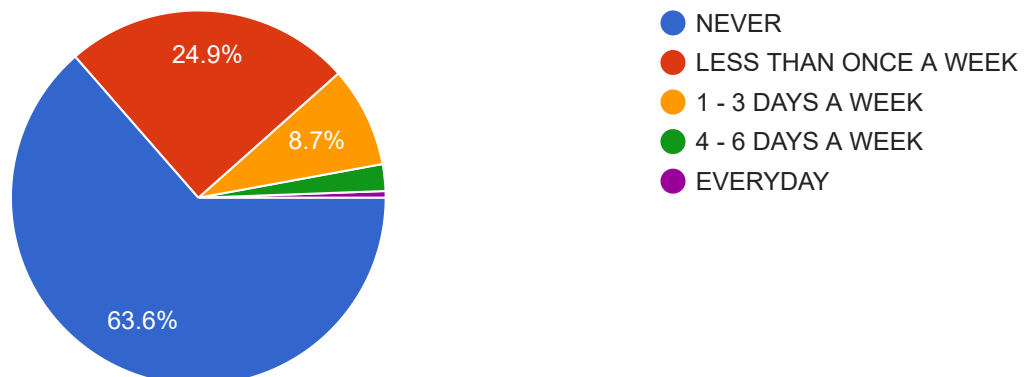
I SMOKE, CHEW TOBACCO, OR USE E-CIGARETTES.

173 responses



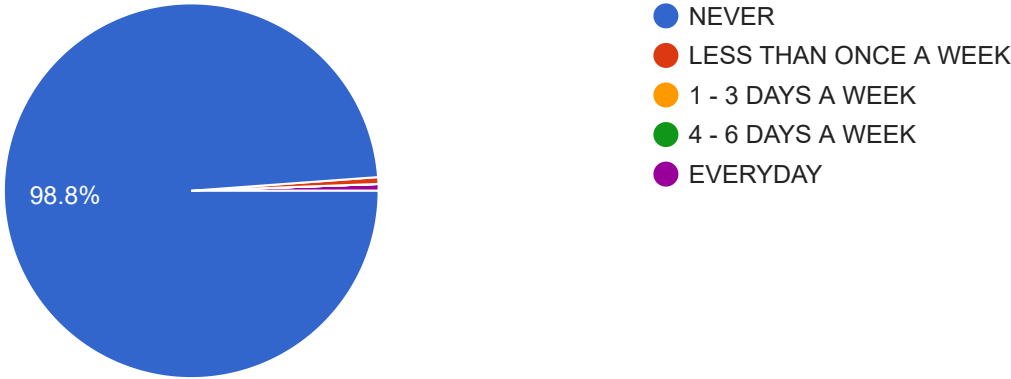
HOW MANY DAYS DO YOU DRINK MORE THAN 4 ALCOHOLIC DRINKS?

173 responses



I USE ILLEGAL DRUGS.

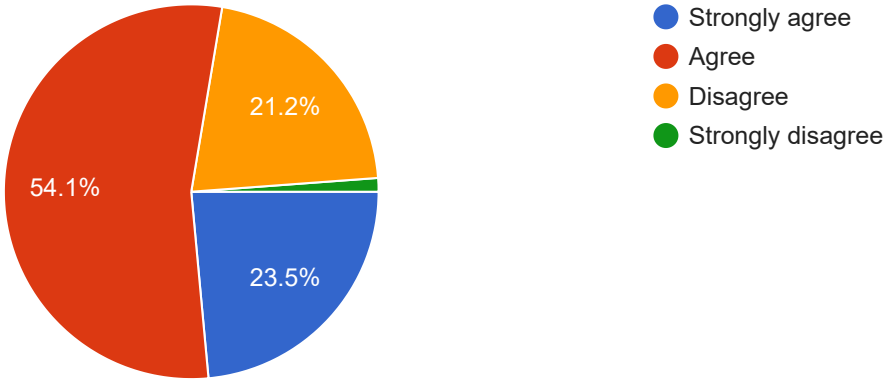
172 responses



PERSONAL SATISFACTION:

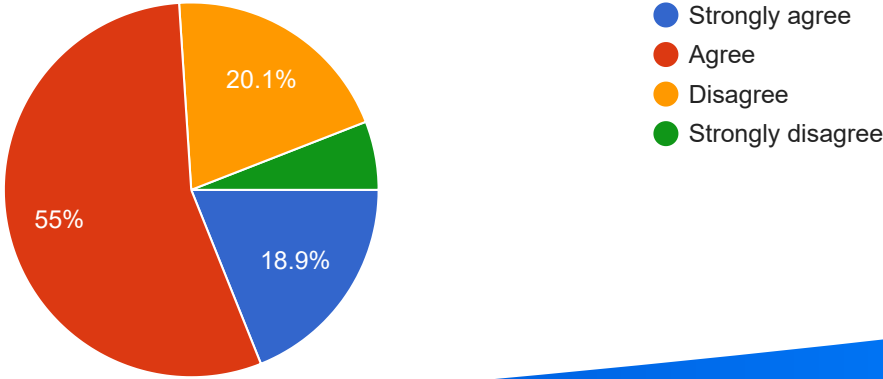
I AM SATISFIED WITH MY ACCESS TO HEALTH CARE IN IROUOIS COUNTY.

170 responses



I AM SATISFIED WITH THE COST OF MY HEALTH CARE IN IROQUOIS COUNTY.

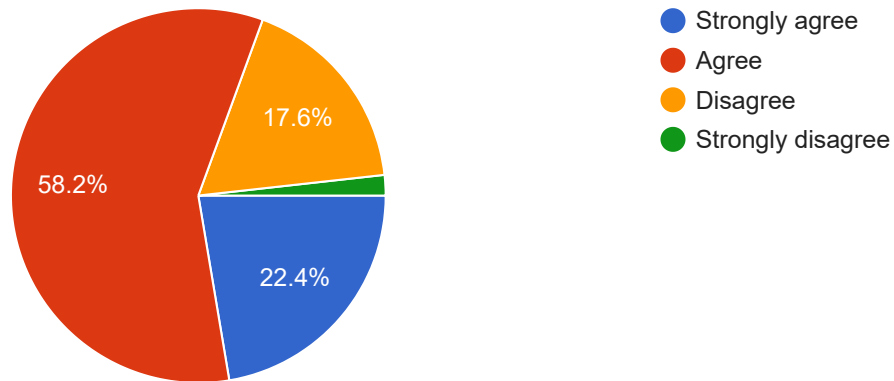
169 responses



LOCAL SURVEY ASSESSMENT QUESTION RESULTS

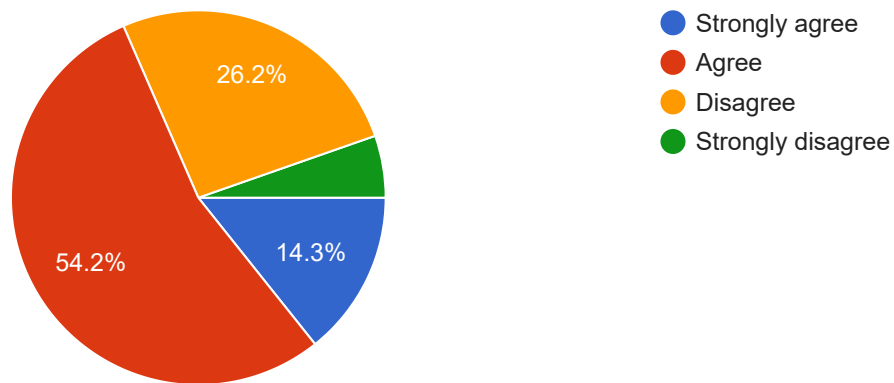
I AM SATISFIED WITH THE QUALITY OF MY HEALTH CARE IN IROQUOIS COUNTY.

170 responses



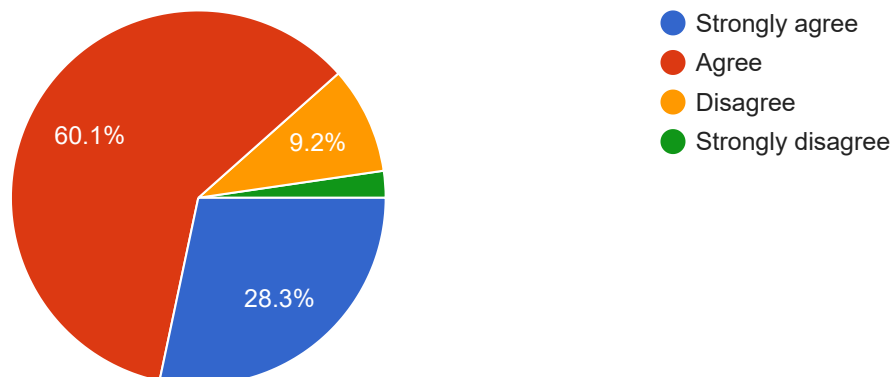
I AM SATISFIED WITH MY ACCESS TO AFFORDABLE DENTAL CARE IN IROQUOIS COUNTY.

168 responses



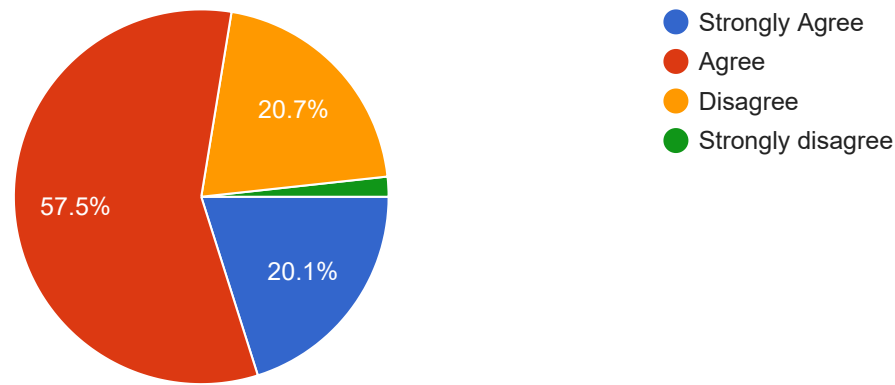
IROQUOIS COUNTY IS A GOOD PLACE TO RAISE CHILDREN.

173 responses



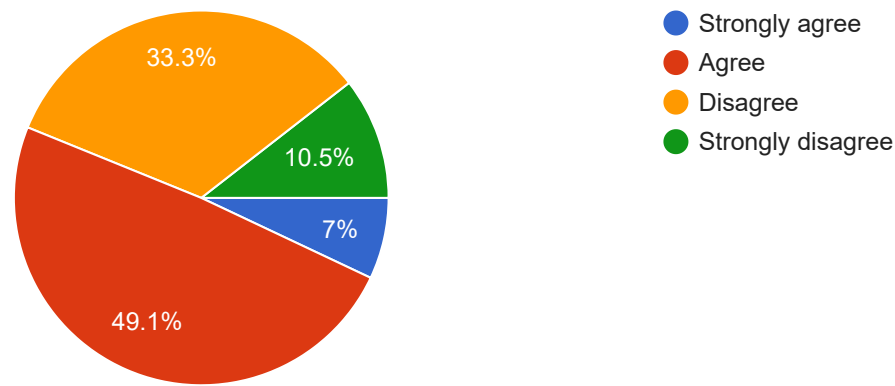
IROQUOIS COUNTY IS A GOOD PLACE TO GROW OLD.

174 responses



IROQUOIS IS A RACIALLY, ETHNICALLY, AND CULTURALLY DIVERSE PLACE TO LIVE.

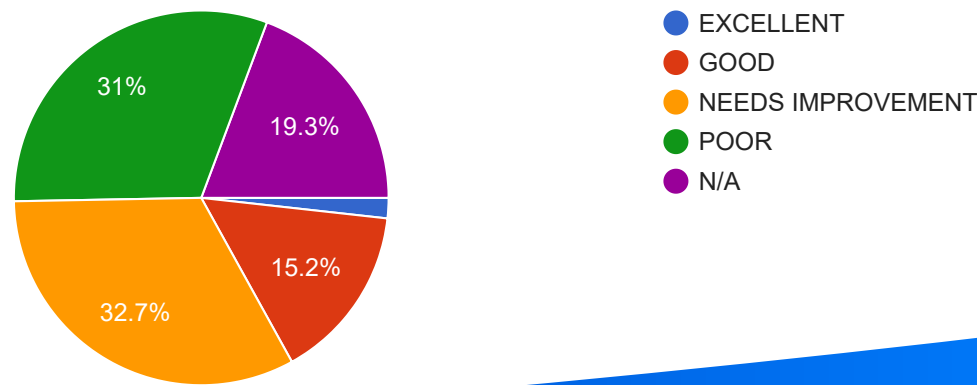
171 responses



NEIGHBORHOOD TRAFFIC AND ROADS:

ACCCESS TO PUBLIC TRANSPORTATION

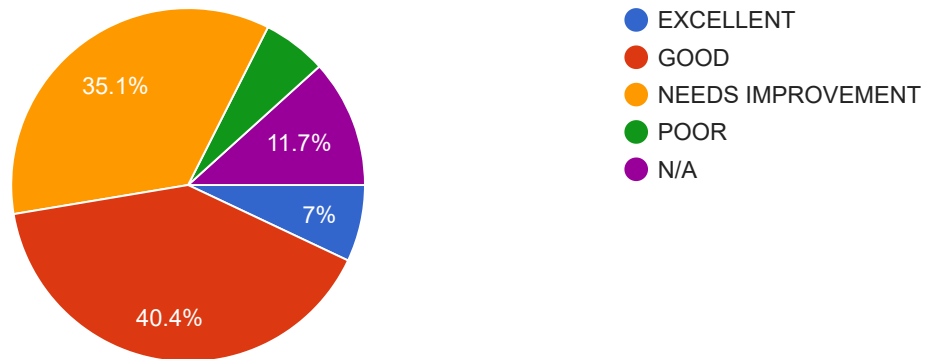
171 responses



LOCAL SURVEY ASSESSMENT QUESTION RESULTS

WHEELCHAIR ACCESSIBILITY

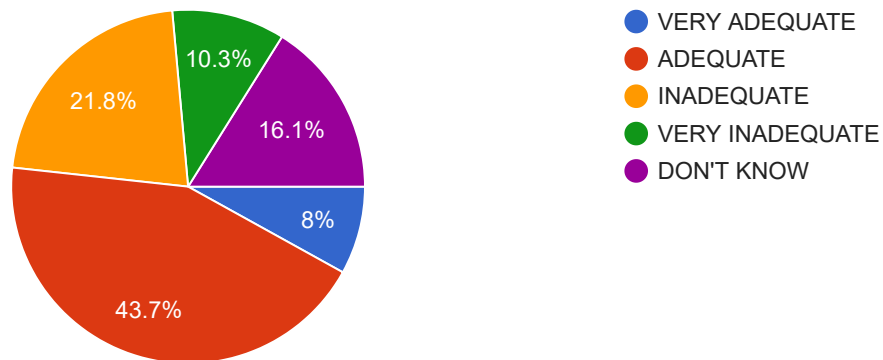
171 responses



COMMUNITY RESOURCES:

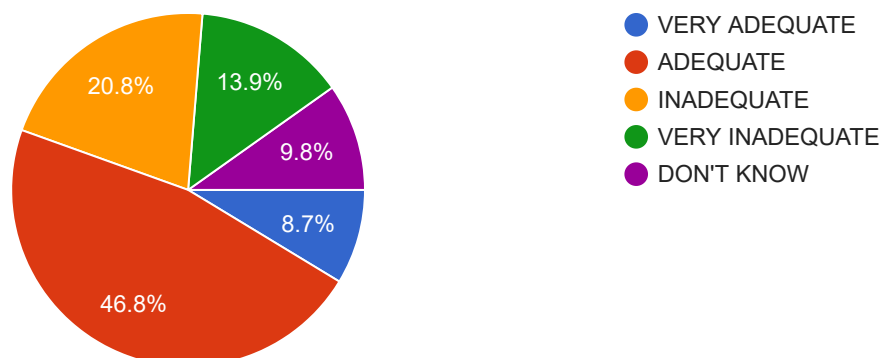
AFFORDABLE HOUSING

174 responses



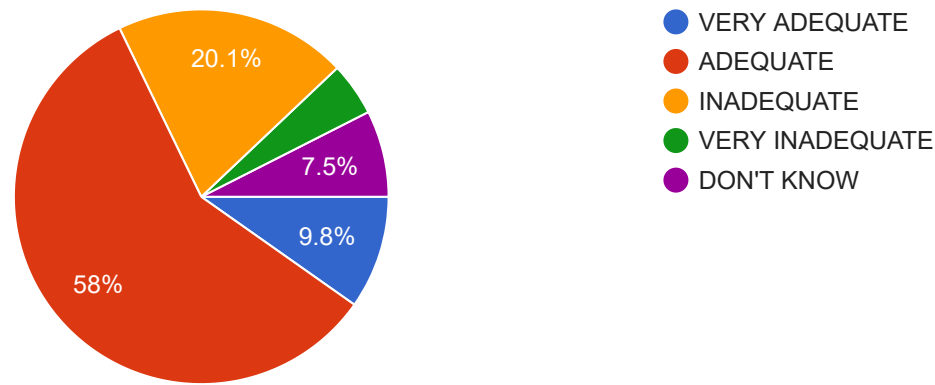
EMPLOYMENT / ABILITY TO FIND JOBS

173 responses



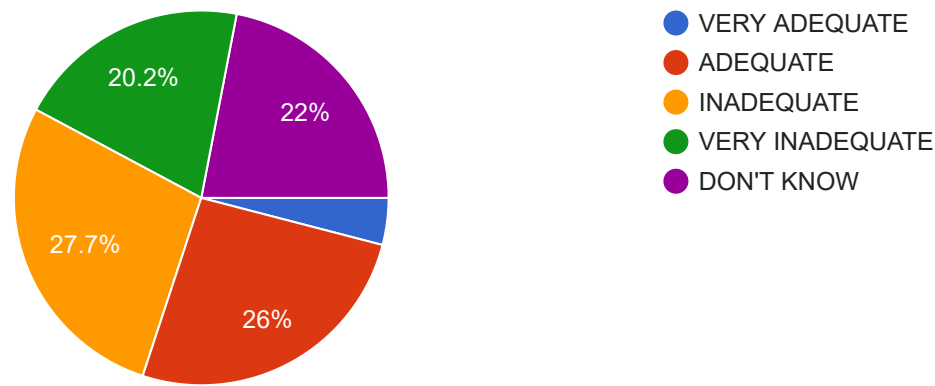
ABILITY TO PAY FOR BASIC NEEDS (I.E. FOOD, CLOTHING, ETC.)

174 responses



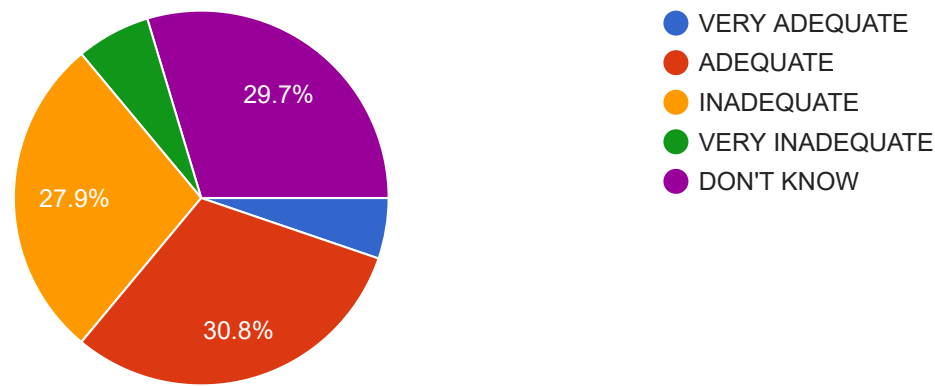
MENTAL HEALTH SERVICES

173 responses



FAMILY SUPPORT SERVICE

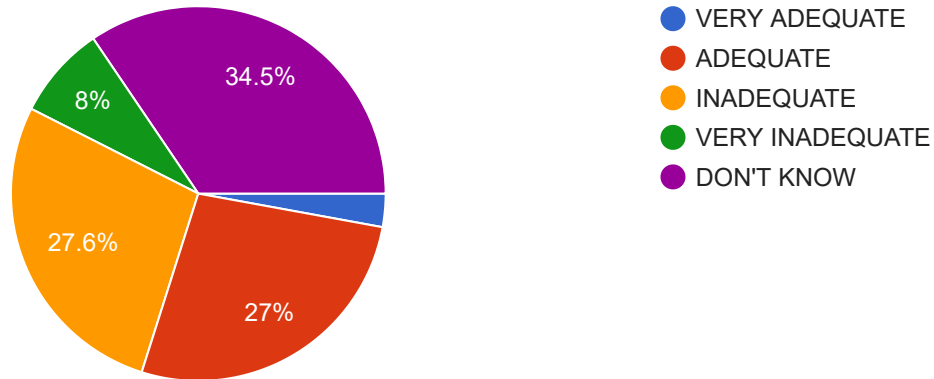
172 responses



LOCAL SURVEY ASSESSMENT QUESTION RESULTS

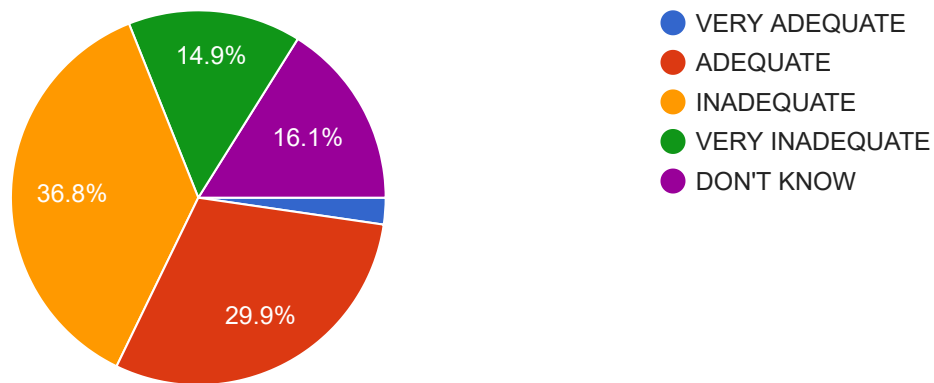
AFFORDABLE CHILDCARE

174 responses



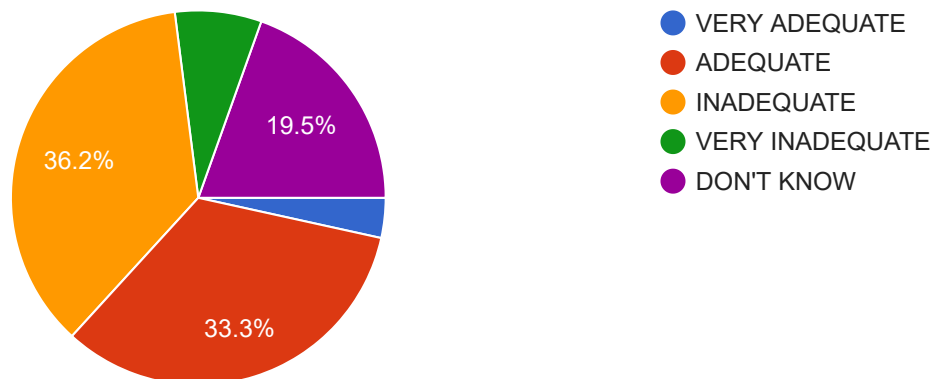
OPPORTUNITIES FOR YOUTH

174 responses



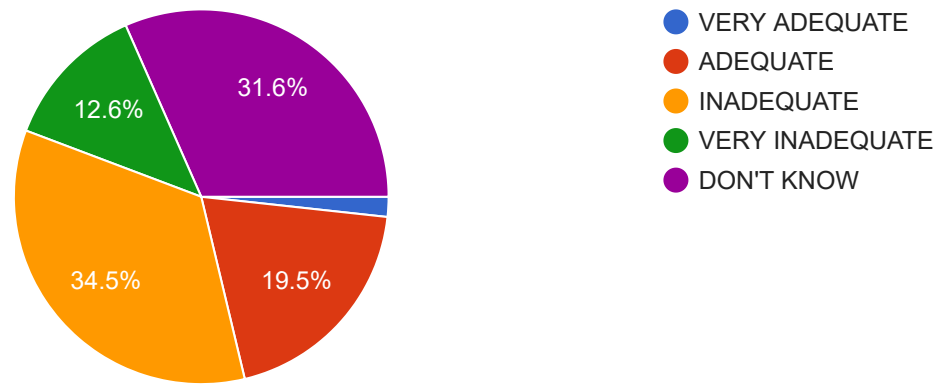
FUNDING FOR SCHOOLS

174 responses



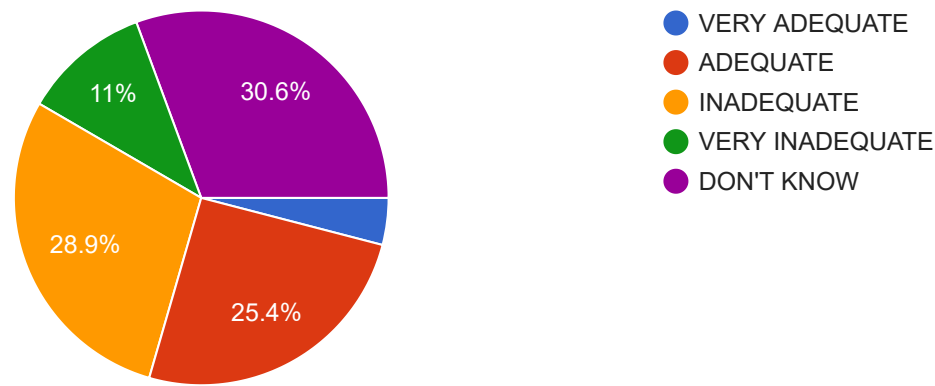
FUNDING FOR AFTERSCHOOL PROGRAMS

174 responses



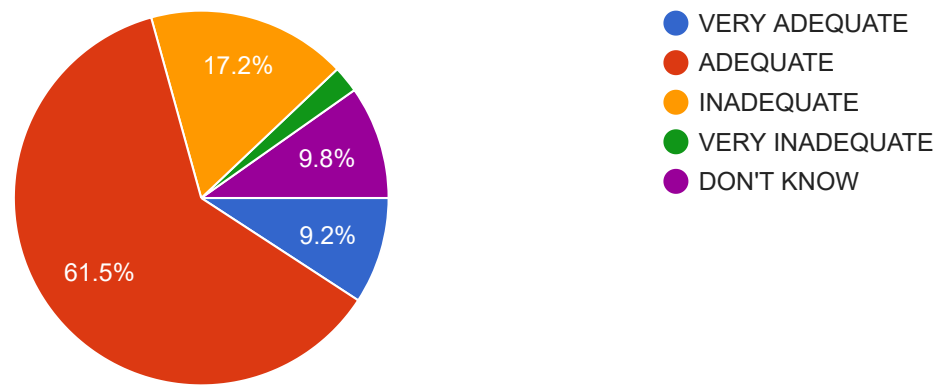
SENIOR SERVICE / ADULT CARE

173 responses



ACCESS TO HEALTHCARE

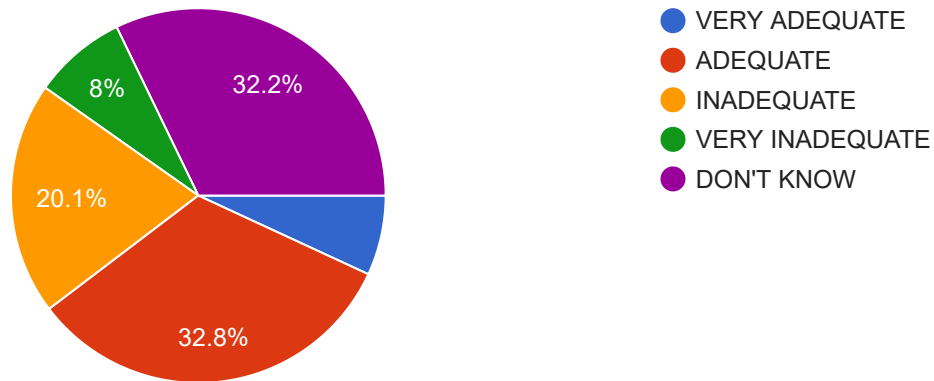
174 responses



LOCAL SURVEY ASSESSMENT QUESTION RESULTS

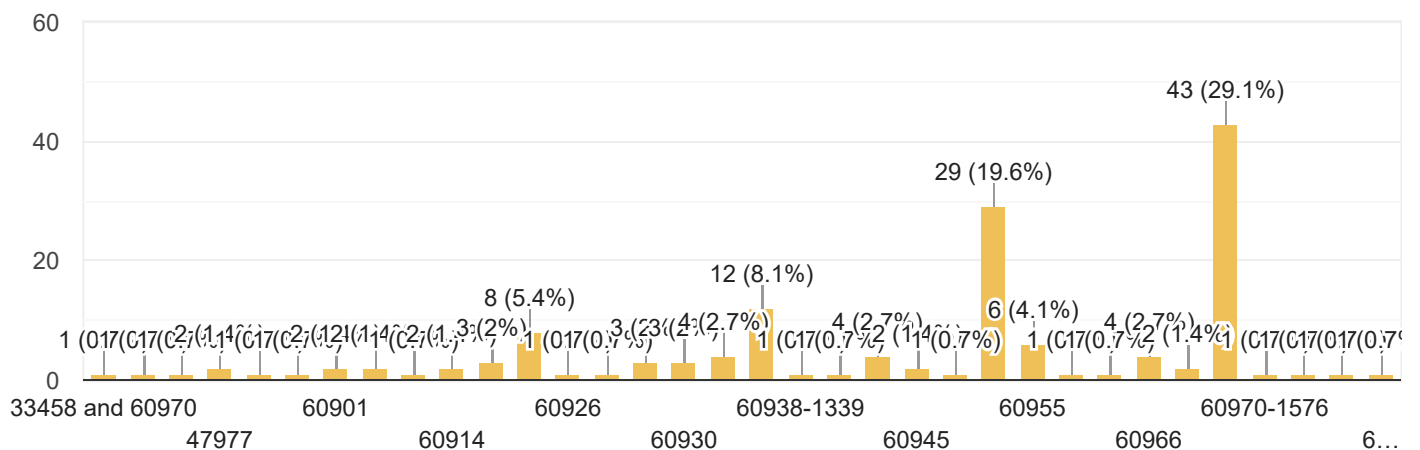
SERVICES FOR LOW INCOME PERSONS

174 responses



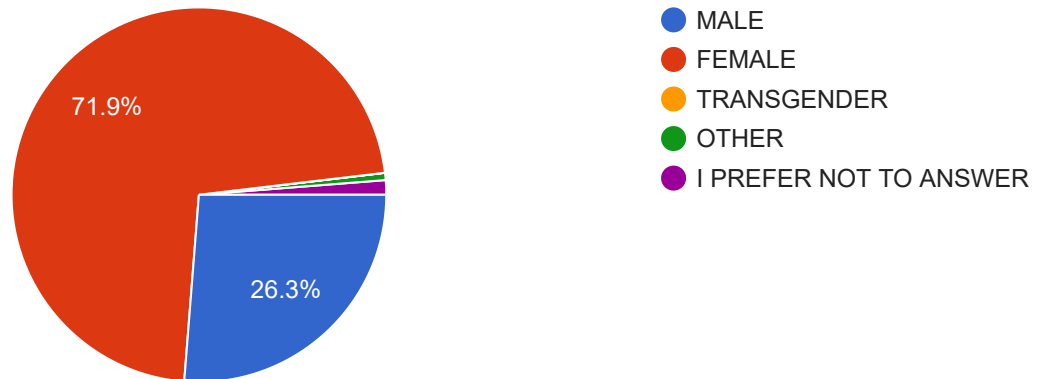
What zip code do you live in?

148 responses



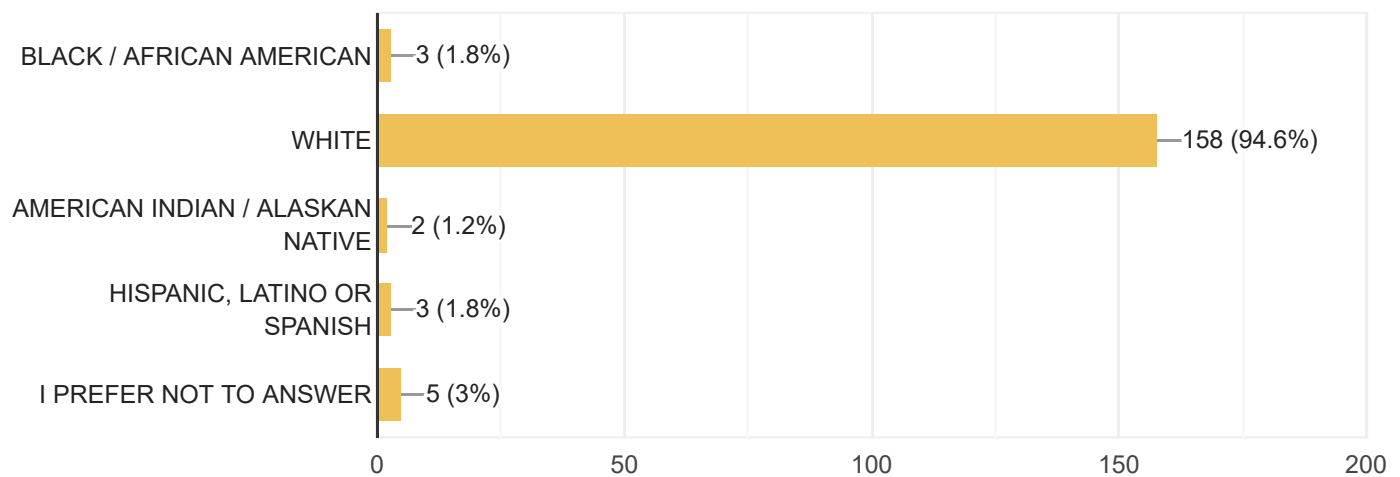
GENDER

160 responses



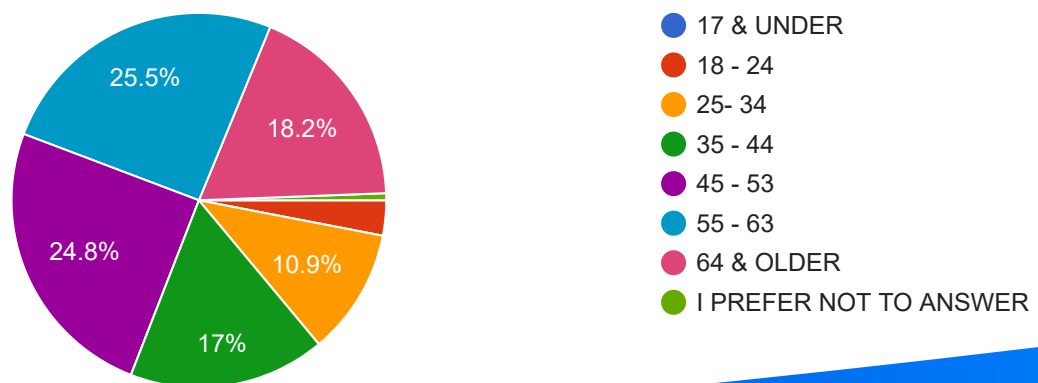
WHAT IS YOUR RACE? (SELECT ALL THAT APPLY)

167 responses



AGE

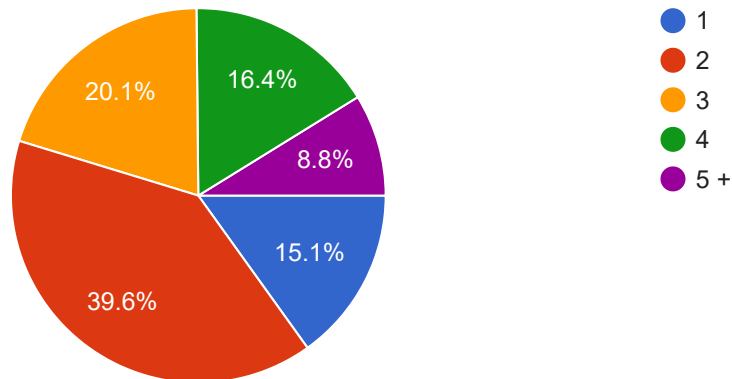
165 responses



LOCAL SURVEY ASSESSMENT QUESTION RESULTS

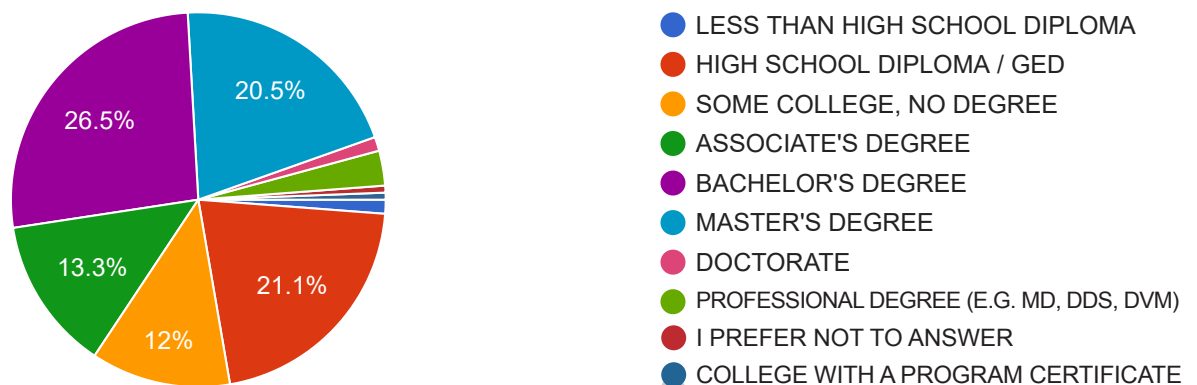
INCLUDING YOURSELF, HOW MANY PEOPLE LIVE IN YOUR HOUSEHOLD?

159 responses



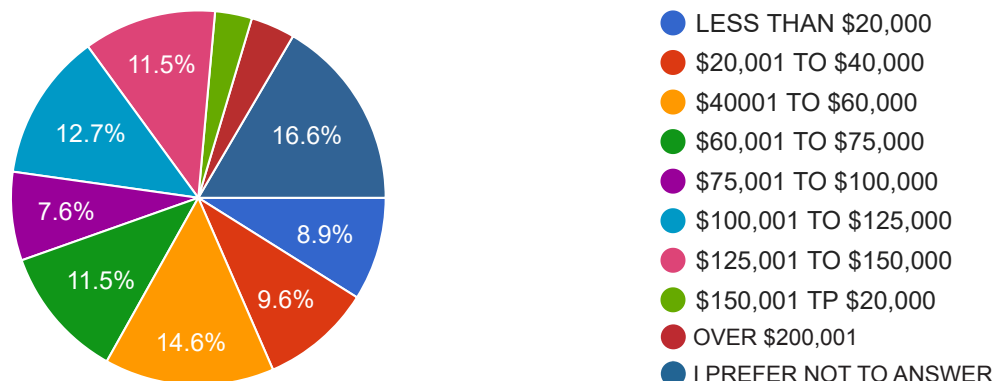
EDUCATION (HIGHEST LEVEL)

166 responses



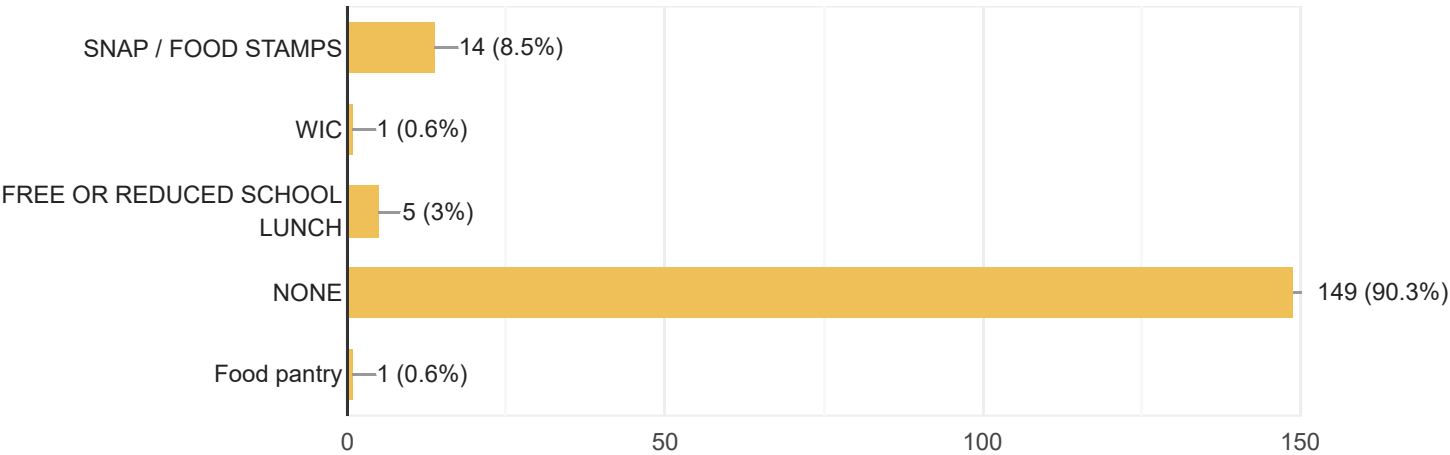
HOUSEHOLD INCOME

157 responses



DO YOU QUALIFY FOR ANY OF THE FOLLOWING PROGRAMS? (SELECT ALL THAT APPLY)

165 responses



HEALTH INSURANCE

6.2% +/- 0.9%

Without Health Care Coverage in Iroquois County, Illinois
Estimate for Without Health Care Coverage in Iroquois County, Illinois.
6.2%. plus or minus 0.9%

6.8% +/- 0.1%

Without Health Care Coverage in Illinois
Estimate for Without Health Care Coverage in Illinois. 6.8%. plus or minus 0.1%

Age and Sex

44.5 +/- 0.2

Median Age in Iroquois County,
Illinois

38.3 +/- 0.1

Median Age in Illinois

Table:
S0101

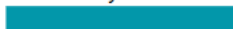
Table Survey/Program:
2020 American Community
Survey 5-Year Estimates

Population by Age Range in Iroquois County

Under 5 years - 5.4%



Under 18 years - 21.7%



18 years and over - 78.3%



65 years and over - 21.5%



0% 10% 20% 30% 40% 50% 60% 70% 80%

Chart Survey/Program: 2020 ACS 5-Year Estimates Data Profiles

Older Population

21.5% +/- 0.2%

65 Years and Older in Iroquois
County, Illinois

15.7% +/- 0.1%

65 Years and Older in Illinois

Table:
DP05

Table Survey/Program:
2020 American Community
Survey 5-Year Estimates

Older Population in Iroquois County

65 to 74 years - 11.4%



75 to 84 years - 7.1%



85 years and over - 3.1%



0% 1% 2% 3% 4% 5% 6% 7% 8% 9% 10% 11% 12%

Chart Survey/Program: 2020 ACS 5-Year Estimates Data Profiles

SUMMARY OF FINDINGS AND RECOMMENDATIONS

The items set forth below are those which found consistent identification and, ultimately, prioritization in the primary information gathering process and which are supported by the secondary information related to demographics and health status.

- Clinic Growth
- Addiction Services
- Surgical Specialty Expansion

NEED IDENTIFICATION AND PRIORITIZATION

Reconciliation of Primary Source Information with Secondary Data
The facilitated primary information gathering process resulted in the discovery of issues subsequently prioritized during discussion by participants and repetition among groups to a list of concerns largely common to the overarching categories of mental health services, including prevention of substance abuse and access to mental health are for the uninsured and underinsured, diabetes, and obesity. The areas chosen were consistent with the needs of the need identified from the secondary information collected and observed.



SYNTHESIZED SECONDARY DATA

FOCUS GROUP # 1

**IROQUOIS MEMORIAL
BOARD OF DIRECTORS**

FOCUS GROUP # 2

**EXECUTIVE
TEAM**

FOCUS GROUP # 3

**IMH
MANAGEMENT**

**THESE GROUPS DISCUSSED
A WIDE VARIETY OF HEALTH
NEEDS AND HEALTH-RELATED
CONCERNS IN SEVERAL
GENERAL CATEGORIES,
INCLUDING:**

- Lack of Ancillary Specialty services in the local area
- Surgical Specialty Provider Shortages
- Transportation availability
- Senior Care
- Pediatric Care
- Underserved Population
- Preventative Health
- Aging Population
- Pain Management
- Drug and Alcohol Addiction treatment options

IMPLEMENTATION STRATEGY

The Identification of the Needs of the Community that we serve and Prioritization Findings and Recommendations have been used to create an action plan to achieve success in health and wellness.

PRIORITY 1

CLINIC GROWTH

IMH is committed to meeting the needs of all patients in the communities that we serve and recognize the vital role these populations serve to our healthcare system as well as the economic development of the communities we live within. IMH currently provides four clinic sites throughout our communities and we are planning to expand that number to reach additional rural communities. Our vision for the Family Practice Clinics will be to expand the patient opportunities to see other specialty providers within our clinic.

PRIORITY 2

ADDICTION SERVICES

Iroquois County is not alone in the struggle with Addiction. We face an ever-changing crisis by the use of different substance shifts. In Illinois, Opioid overdose deaths have been on the rise since 2019. Iroquois County is rated 6th in Illinois opioid fatality with 33.7 percent (Opioid Fatality Rate per 100,000 Capita). Some of our priorities will be focused on prevention, treatment and recovery, harm reduction and justice-involved population.

PRIORITY 3

SURGICAL SPECIALTY EXPANSION

Many residents in our community face transportation barriers to achieving optimal health and wellness. These challenges make it difficult for the people of our community to access the Specialty Surgeons they need which then negatively impacts their health. As a healthcare leader in our area, IMH is committed to the expansion of Specialty Surgical Services at our facilities in order to ensure the members of our community get the treatment and surgeries that they need.

RESOURCE INVENTORY

IMH offers a wide range of services and care to portions of five counties in Illinois and Indiana. The hospital provides general medical and surgical care for inpatient, outpatient, IMH Satellite Clinic patients, emergency room patients, and participates in the Medicare and Medicaid programs.

DIAGNOSTIC SERVICES

- Cardiology
- Laboratory
- Respiratory Therapy
- Medical Imaging

OUTPATIENT SERVICES

- Cardiopulmonary Rehab
- Business and Industry Services
- Iroquois Home Health
 - IV Therapy/PICC Lines
 - Cardiac and post-operative care
 - Diabetic management
 - Extensive wound care/dressings
 - Care of the terminally ill
 - Internal nutrition (feeding tubes)
 - Catheter care/injections
 - Complex teaching
 - Disease management
 - Pediatric care
 - Ostomy care education
 - Phototherapy
- Iroquois Memorial Hospital Hospice
- Medical transport van (non-emergency)
- Nutrition counseling

- Primary Care
 - Gilman Clinic
 - Kentland Clinic
 - Milford Clinic
 - Multi-Specialty Clinic
- Rehab Services
 - Physical Therapy
 - Occupational Therapy
 - Speech Therapy
 - Work Conditioning
 - Pediatric Physical Therapy
 - Pediatric Occupational Therapy
 - Pediatric Speech Therapy

CLINICAL SERVICES

- 24-hour emergency department
- Anesthesiology
- Cardiology services
- Crisis intervention
- Infection control
- Intensive care and telemetry
- Medical imaging
- Pathology
- Pharmacy
- Prompt Care
- Surgery
- Swing Bed Program



SPECIALTY CLINICS

- Cardiology
- Gastroenterology
- Neurology
- Oncology
- Orthopedic surgery
- Otolaryngology (ENT)
- Pain
- Podiatry
- Pulmonology
- Urology
- Uro/Gyne
- Wound care

RESIDENT HOME

- Medicare Certified
- Medicaid Certified
- 24-hour licensed skilled nursing care
- 24-hour emergency medical care available with attached hospital
- Respite care
- Hospice care
- Individualized care plans
- Resident choice menu planning

- Special diet accommodations
 - Physical Therapy
 - Occupational Therapy
 - Speech Therapy
 - Respiratory therapy
 - Intravenous therapy
 - Wound and ostomy care
 - Social service
 - A full schedule of activities including community outings
 - Open visiting hours
 - Care conferences
 - Wheelchair accessible van
 - Access to routine medical care and specialty care without leaving the Iroquois Memorial Hospital campus including:
 - Laboratory
 - MRI
 - X-Ray services
- 



AREA HEALTH PHYSICIANS

PHYSICIAN

Aravind Reddy, MD
 Iftekhar Awan, MD
 William Davenport, MD
 Eghe Egiebor, MD
 Emad Fahmy, MD
 Zewdu Haile, MD
 Zachary Iles, MD
 Tomasz Lis, MD
 Danielle McGee, MD
 Kathleen Schmelka, MD
 Pradip Shah, MD
 Dinesh Shah, MD
 Andrew Zasada, MD
 Thomas O'Connor, MD
 David Sutherland, MD
 Hytham Beck, MD
 Daniel Chase, MD
 Alex Michalow, MD
 Thomas Betlej, MD
 Mark Pool, MD
 Noman Siddiqui, MD
 Timothy Friedrich, DPM
 Rodney Alford, MD, MBA
 Gonzalo Florido, MD, FACP
 Crisanto Reyes, MD
 Teresita Torres, MD, FAAFP
 Iroquois Mental Health Center
 John Tricou, MD

SPECIALTY

Cardiology
 Emergency Medicine
 Emergency Medicine
 Emergency Medicine
 Emergency Medicine
 Emergency Medicine
 Emergency Medicine
 Emergency Medicine
 Emergency Medicine
 Emergency Medicine
 Emergency Medicine
 Emergency Medicine
 Emergency Medicine
 Emergency Medicine
 Emergency Medicine
 Gastroenterology
 Gastroenterology
 General Surgery
 General Surgery
 Orthopedic Surgery
 Pathology
 Pathology
 Pathology
 Podiatry
 Primary Care
 Primary Care
 Primary Care
 Primary Care
 Psychology
 Radiology

ALLIED HEALTH PROVIDERS

PHYSICIAN

Peter Pollochek, CRNA
 Stuart Rotramel, CRNA
 Jaelyn French, MSN, APRN, FNP-BC
 Susan Hanson, FNP-BC
 Megan Rich, MSN, RN, AGPCNP-BC, FNP-BC
 Chelsea Wichtner, FNP-BC
 Jennifer Grant, RA

SPECIALTY

Anesthesia
 Anesthesia
 Family Practice
 Family Practice
 Family Practice
 Family Practice
 Radiology

CENTERS AND CLINICS

Iroquois County
Public Health Department
1001 East Grant Street
Watseka, IL

Iroquois Memorial Hospital
Gilman Clinic
508 E. Crescent
Gilman, IL

Iroquois Memorial Hospital
Kentland Clinic
303 N. Seventh Street
Kentland, IN

SENIOR CARE

ARC of Iroquois County
700 E. Elm Street
Watseka, IL

Creekside Prairie Independent Living
510 A Prairie Lane
Cissna Park, IL

Gilman Nursing Home
1390 S. Crescent Street
Gilman, IL

Heritage Woods of Watseka
577 Martin Avenue
Watsaka, IL

Iroquois Resident Home
200 E. Fairman Avenue
Watsaka, IL

Kingdon Gardens Assisted Living
819 W. Lafayette Street
Watsaka, IL

Iroquois Memorial Hospital
Milford Clinic
34 E. Jones Street
Milford, IL

Iroquois Memorial Hospital
Multi-Specialty Physicians
200 E. Fairman Avenue
Watsaka, IL

Iroquois Memorial Hospital
Specialty Clinic
200 E. Fairman Avenue
Watsaka, IL

Iroquois Mental Health Center
323 W. Mulberry Street
Watsaka, IL

Merkle-Knipprath Catholic Home
1190 E. 2900 North Road
Clifton, IL

Piper City Rehab and Living Center
600 S. Maple Street
Piper City, IL

Prairie View Lutheran Home
403 N. Fourth Street
Danforth, IL

Sheldon Health Care Center
170 W. Concord Street
Sheldon, IL

Watsaka Rehabilitation and Health Care
715 E. Raymond Road
Watsaka, IL

George Ade Memorial Health Care
3623 Indiana 16
Brook, IN



REMARKS

The IMH CHNA was conducted in 2022. The process followed IRS guidelines allowing for a more confident focus of effort and resources. IMH is grateful to the Board of Health Members, its staff, community leaders, and citizens who offered their thoughtful input for the assessment. This report was shared to the Iroquois Memorial Executive team and the Board of Health in July of 2022 for further revision, updates of changes prior to widespread publication.

**CHOOSE PEOPLE YOU KNOW AND CARE YOU TRUST.
CHOOSE IMH.**



